

MAC DRIVER 3.3 (PDF MODE) SETUP GUIDE



Legal Notes

Unauthorized reproduction of all or part of this guide is prohibited.

The information in this guide is subject to change without notice.

We cannot be held liable for any problems arising from the use of this product, regardless of the information herein.

Regarding Trademarks

Mac, Mac OS, and Bonjour are trademarks of Apple Inc., registered in the U.S. and other countries.

Windows is a registered trademark or trademark of Microsoft Corporation in the United States and/or other countries.

Table of Contents

Chapter 1 Installation

Package Installer Setup	1-1
Adding Printers	1-5
Switching to PDF Mode	1-6
Configuring Installable Options	1-7

Chapter 2 PDL Switch Tool

PDL Switch Preference Pane	2-1
Switching between KPDL, PDF, and PCL modes	2-2
Uninstalling the PDL switch tool	2-2

Chapter 3 PDF Mode Features

Print Dialog	3-1
Standard Panes for PDF Mode	3-1
Supported Print Features	3-11

Chapter 4 PDF Comparison with KPDL

1 Installation

Mac Driver 3.3 supports Mac OS X 10.6 and later. Its PDF Mode can be installed by running the provided package installer. A user account with administrative rights is required to perform the installation. The recommended steps are described below.

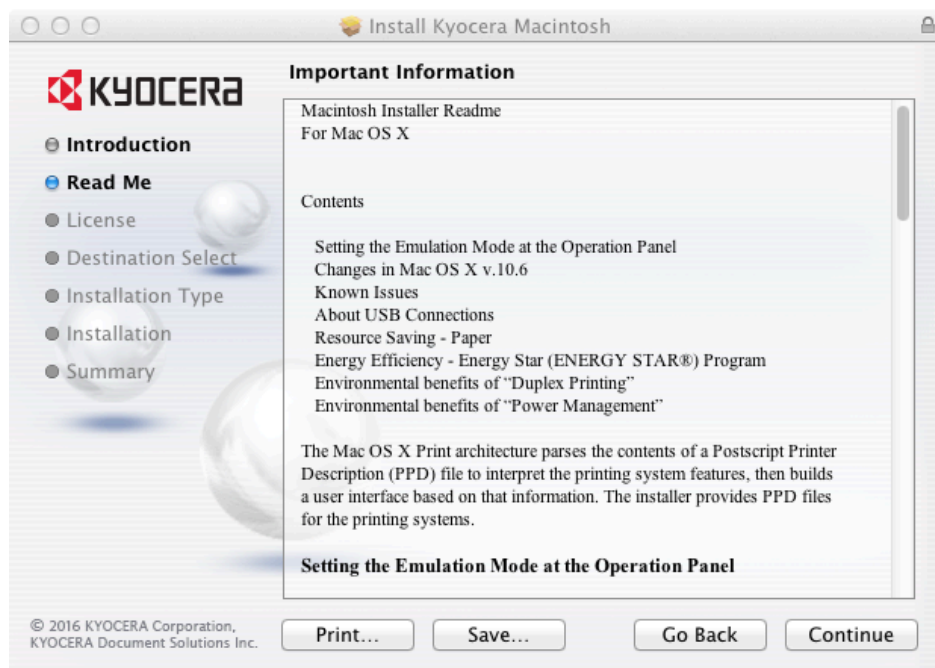
Package Installer Setup

You can install the driver using the provided package installer.

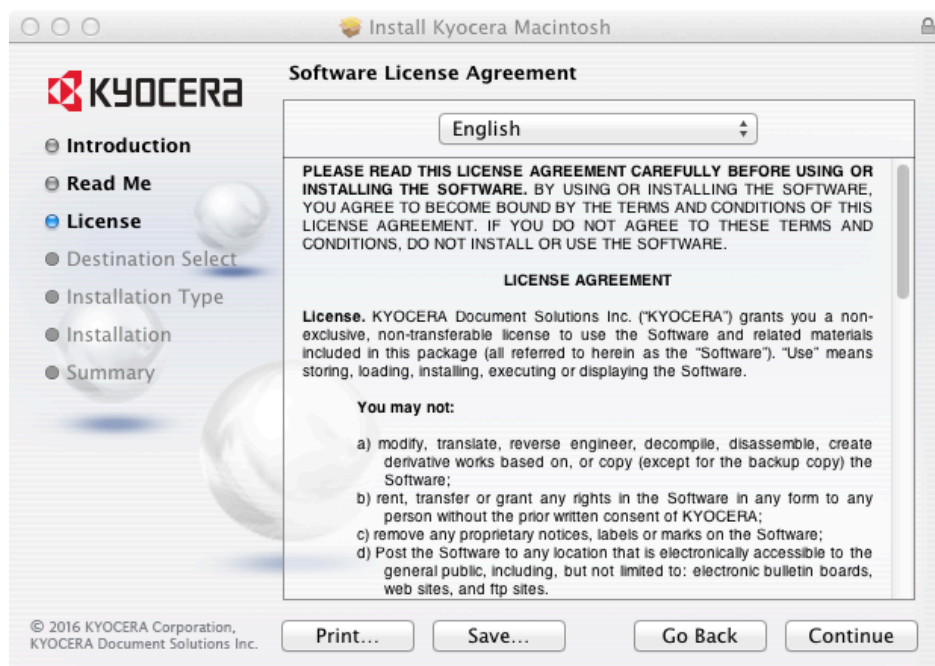
1. Double-click the **.DMG** file to run the installer.
2. In the installer dialog, click **Continue** to proceed to the Readme page.



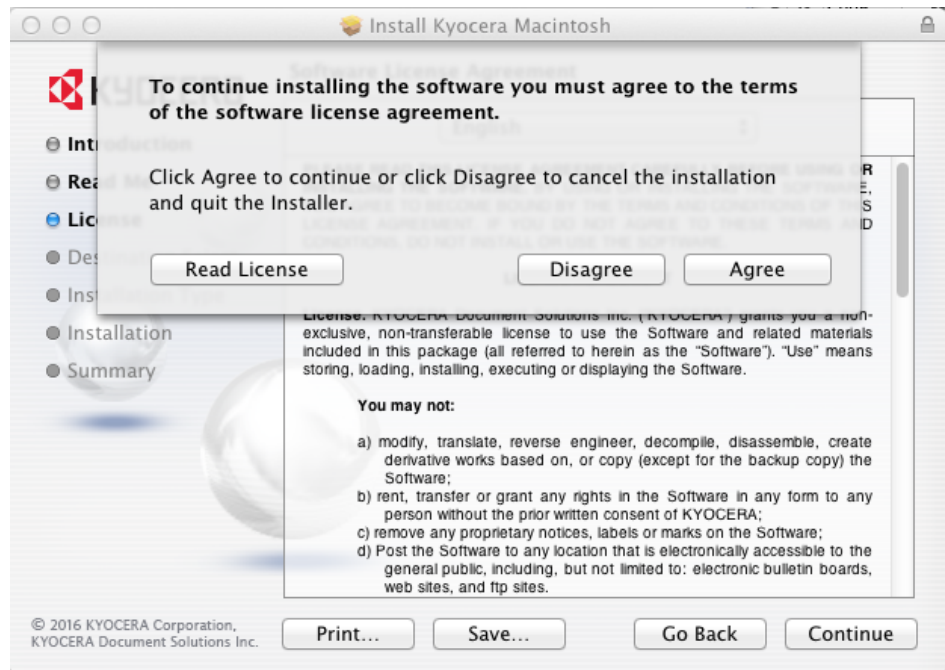
3. Click **Continue** to proceed to the license agreement page.



4. Review the **Software License Agreement**, and then click **Continue**.

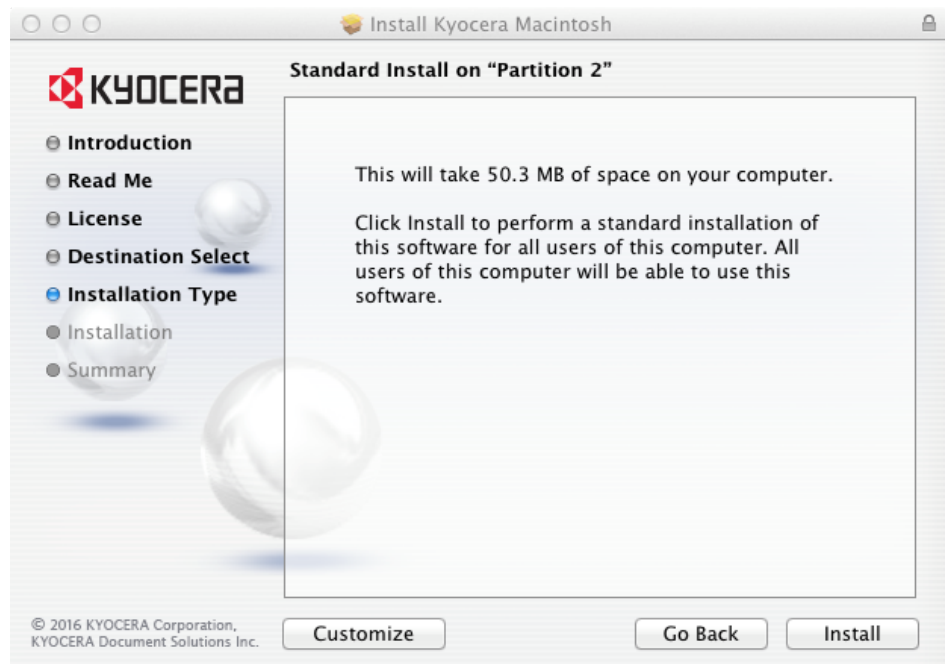


5. Click **Agree** to accept the terms of the license agreement.



6. Click **Install** and enter the admin password to complete the standard installation. Alternatively, you can select **Customize** to perform a custom installation. For custom installation, select the **Print Option Pane** checkbox to install the Print Option Pane.

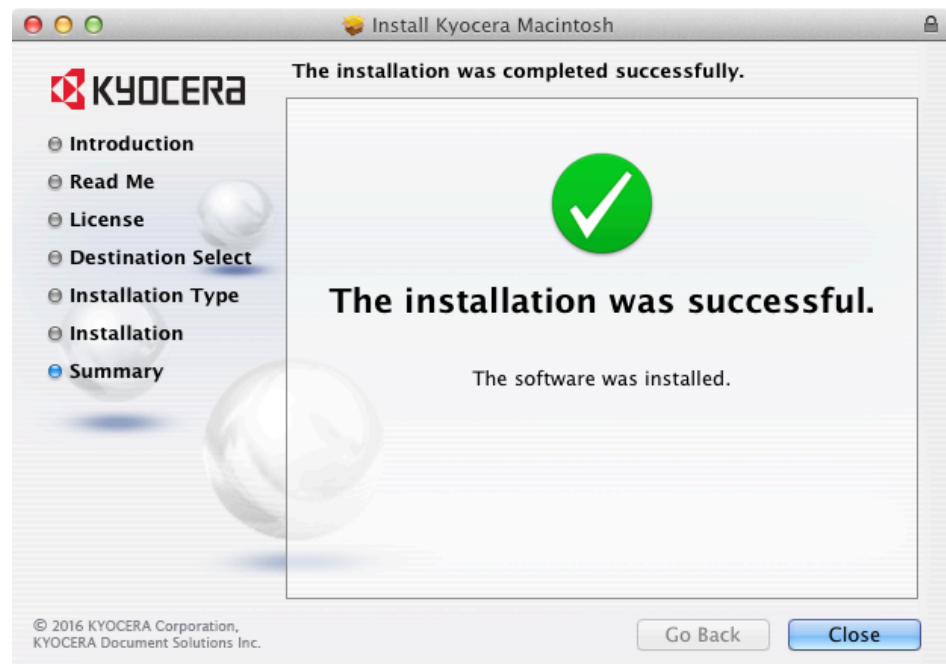
Standard Installation Page



Custom Installation Page



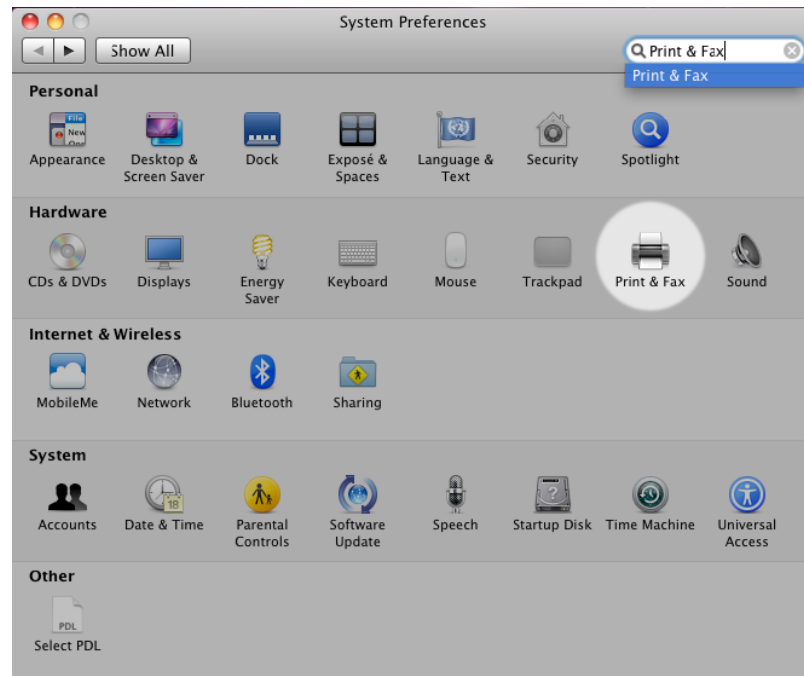
7. Click **Close** to exit when the installation is complete.



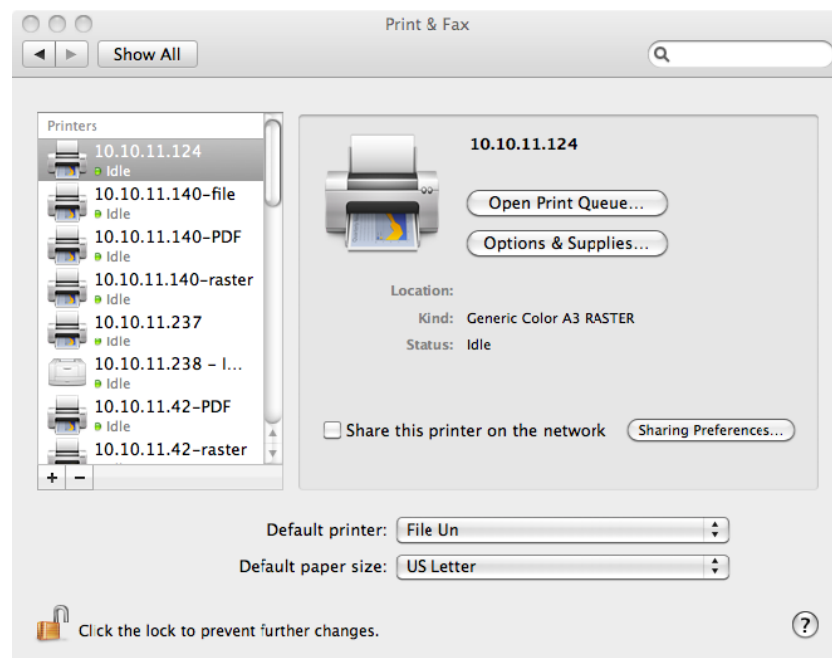
Adding Printers

After you install the driver, you can add the printers to be used on the system.

1. Open **System Preferences** and click **Print & Fax** (this may also be called **Print & Scan** or **Printers & Scanners**, depending on the Mac OS X version you are using).



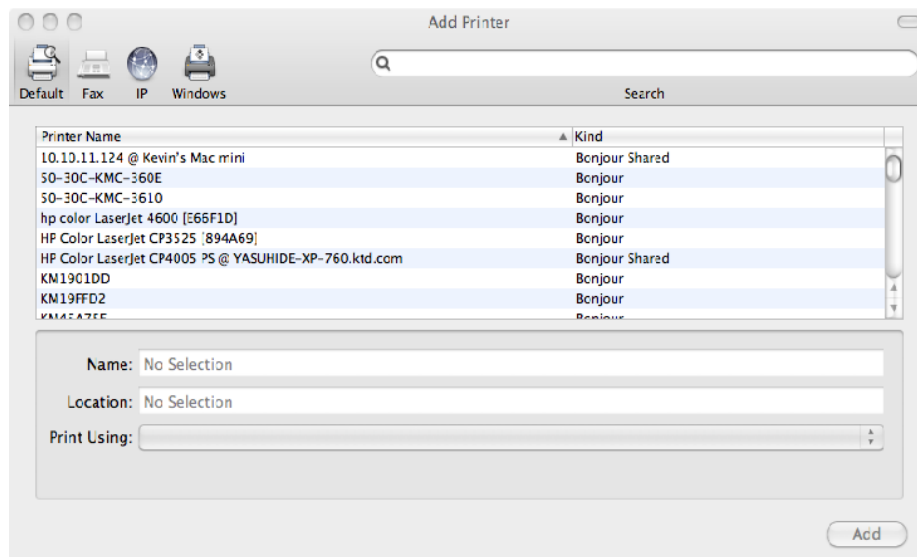
2. In the **Print & Fax** dialog, you can click the "+" icon at the bottom of the **Printers** list to open the **Add Printer** dialog.



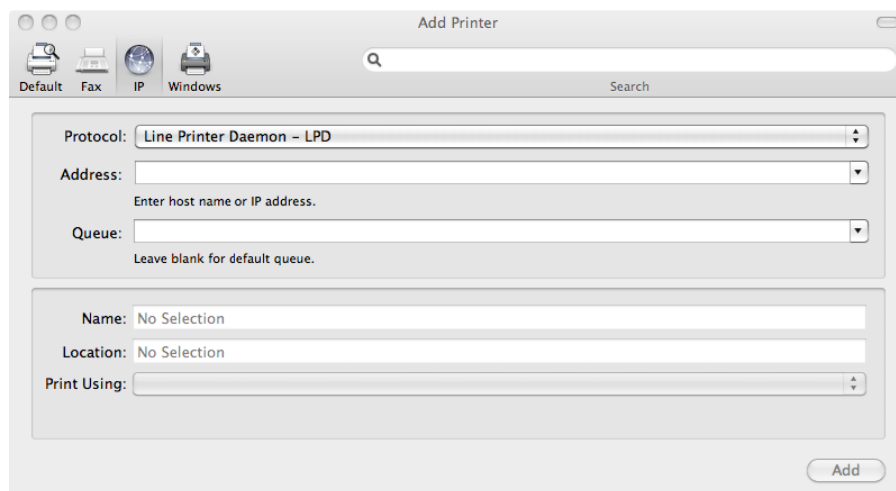
To add a printer, you must first choose a connection type—**Bonjour**, **IP Printer**, or **Windows**. If you choose the **Default** connection type, Printer Setup Utility displays a list of all available printers with Bonjour support.

When you select a printer to add to the printers list, Printer Setup Utility retrieves the selected printer's address, icon, and model information. Printer Setup Utility then uses this information to create a new printer queue, and then adds the printer to the list when you click **Add**.

Note: On Mac OS 10.10 and newer, **Secure Airprint** may be selected by default.



For better printing support, it is recommended to use **Line Printer Daemon (LPD)** for the protocol. To add an LPR printer that uses IP, enter the printer's DNS host name or IP address and then select the appropriate model from the **Printer Model** menu. The matching PPD for the printer is automatically selected by the OS.



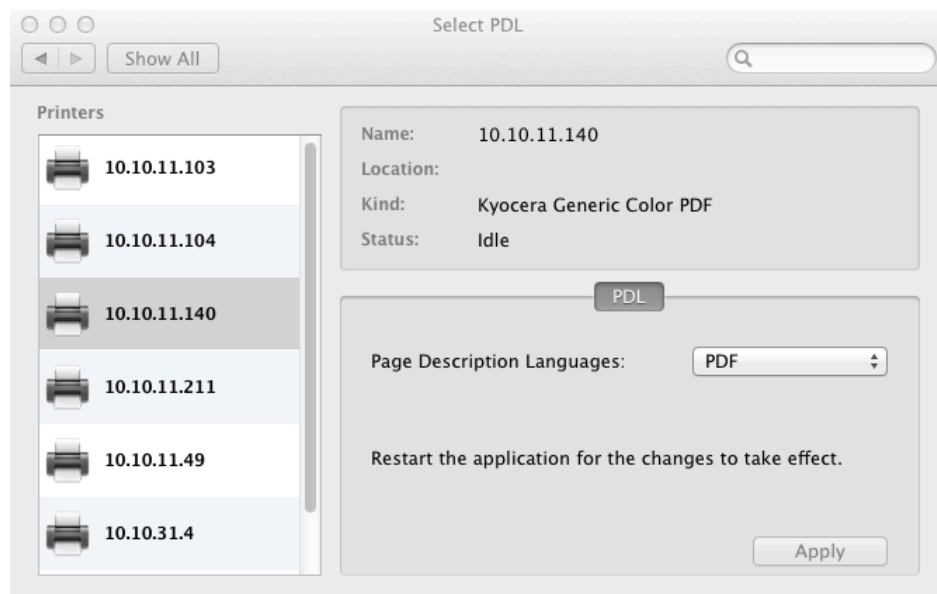
Note: Installable options must be set manually after you switch to PDF mode.

Switching to PDF Mode

After you install the driver and add at least one printer, you can switch the driver to PDF Mode.

1. Open **System Preferences > Select PDL**.

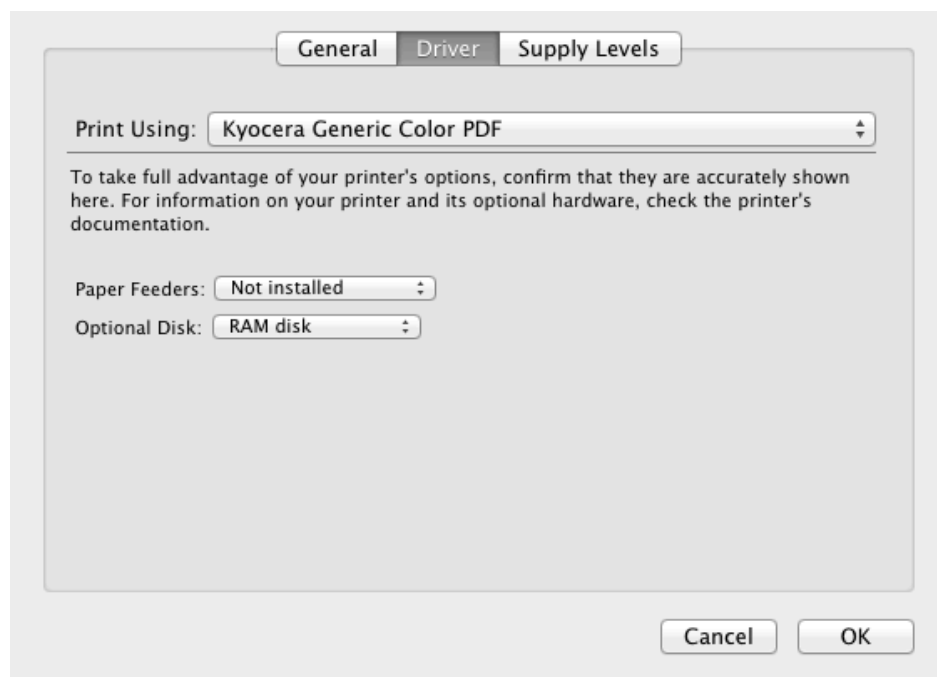
2. Select a printer from the **Printers** list.
3. Select **PDF** from the **Page Description Languages** drop-down menu.
4. Click **Apply**.



Configuring Installable Options

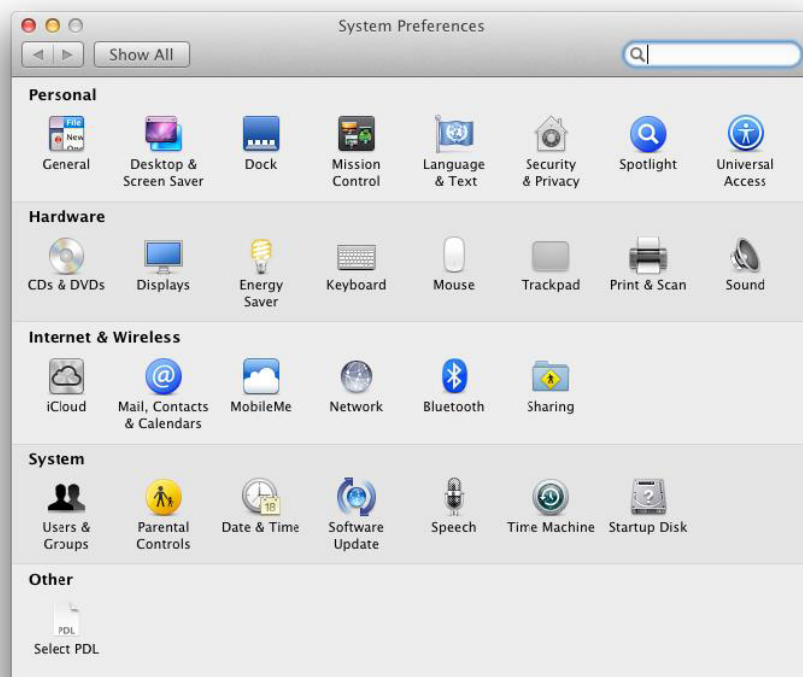
After you switch the driver to PDF mode, you can set up the installable options for the printer.

1. Click **Print & Fax** from **System Preferences**.
2. Select a printer from the **Printers** list.
3. Click **Options & Supplies**.
4. Click the **Driver** tab to modify the installable options.



2 PDL Switch Tool

Once the driver package is installed, the PDL switch tool appears in the **System Preferences** dialog under **Other** > **Select PDL**. The PDL switch tool only works with Mac Driver 3.3 and the models supported by the driver.



PDL Switch Preference Pane

The PDL Switch preference pane is made up of 3 main components: Discovery, Device Status, and PDL Control.

Discovery

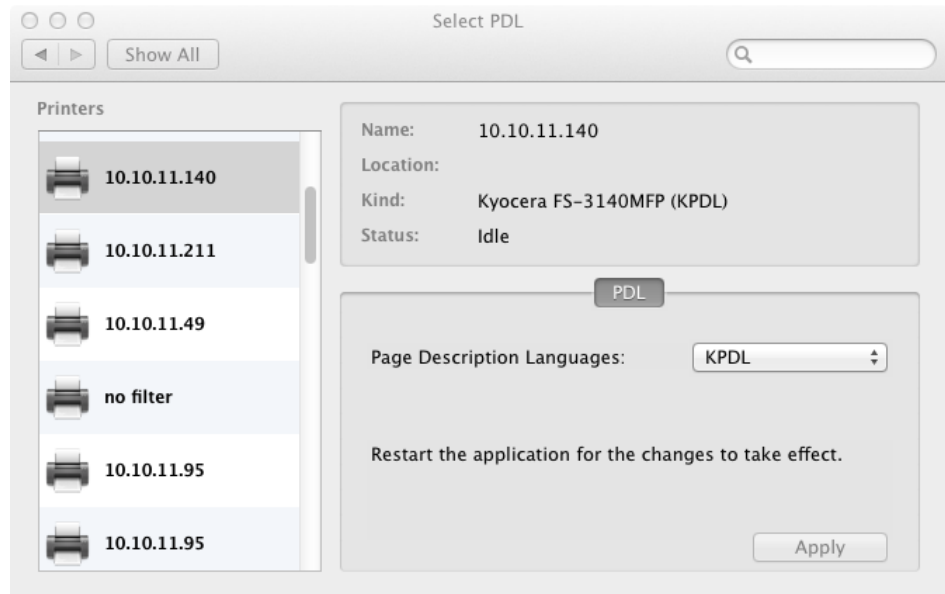
The **Printers** list displays the printers discovered by the driver. The current printer is selected.

Device Status

The upper section shows the properties of the selected printer, including its current status.

PDL Control

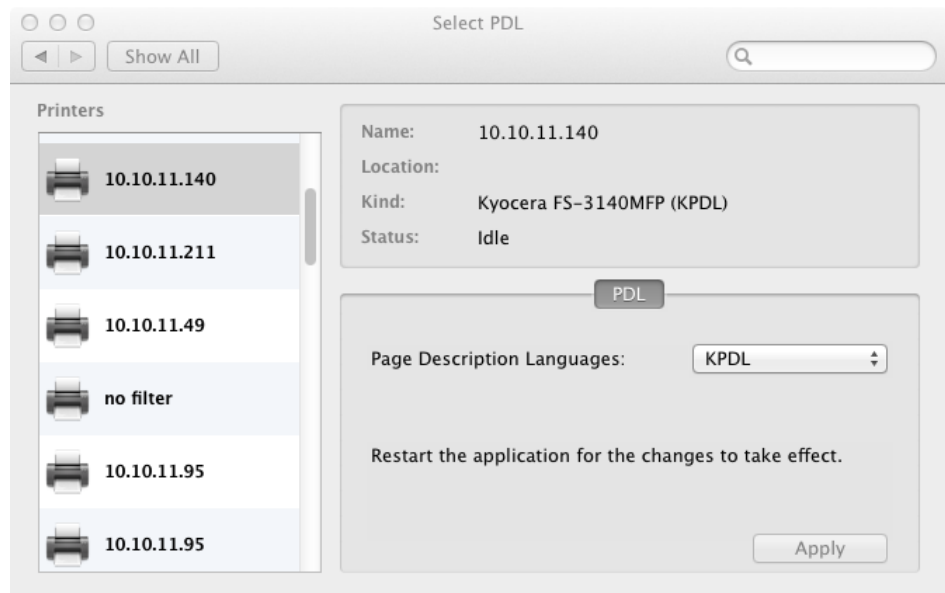
The lower section allows you to modify the PDL. After switching the PDL, all open applications need to be restarted for the changes to take effect.



Switching between KPD, PDF, and PCL modes

The following steps describe how to switch between KPD, PDF, and PCL modes.

1. Open **System Preferences > Select PDL**.
2. Select a printer from the **Printers** list.
3. Select **KPD**, **PDF**, or **PCL** from the **Page Description Languages** drop-down menu.
4. Click **Apply**.



Uninstalling the PDL switch tool

The PDL switch tool can be uninstalled from **System Preferences**.

1. Open **System Preferences**.

2. Right-click the **Select PDL** icon and then click **Remove “Select PDL” Preference Pane**.

3 PDF Mode Features

Print Dialog

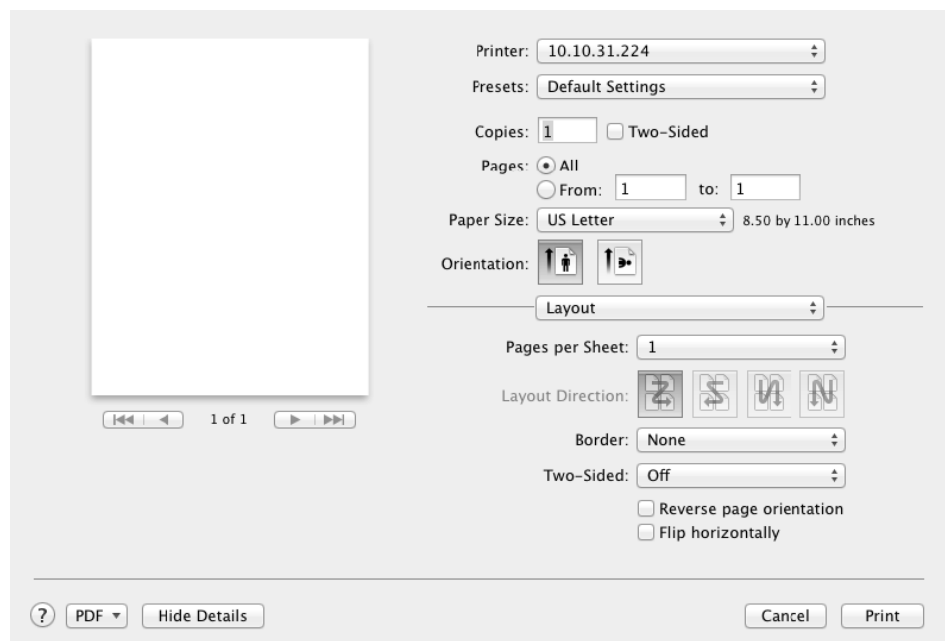
The **Print** dialog appears when you select **Print** from the **File** menu of an application. The **Print** dialog has some settings panes provided by the OS and can also be extended to allow for third-party customization. The number of settings panes available in the **Print** dialog and the specific information in each pane varies depending on the selected printer model, whether the printer supports KPD_L, and whether there is any manufacturer customization of the **Print** dialog in the installed driver.

Standard Panes for PDF Mode

The printing system uses information from the PPD file to populate many of the model-specific features in these panes located at the bottom of the **Print** dialog. Actual selections vary by OS. Some features such as **Border**, **Reverse page orientation**, **Flip horizontally**, **Pages to Print**, and **Page Order** do not work in PDF mode.

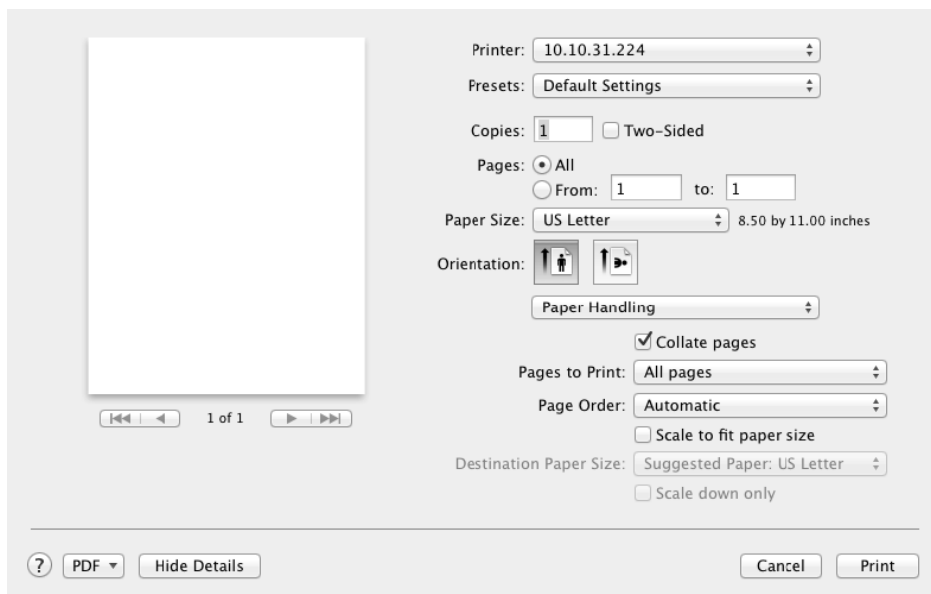
Layout Pane

The **Layout** pane provides settings for pages per sheet and duplex.



Paper Handling Pane

The **Paper Handling** pane provides settings for destination paper size after scaling.



Printer: 10.10.31.224

Presets: Default Settings

Copies: 1 ☐ Two-Sided

Pages: ☒ All
☐ From: 1 to: 1

Paper Size: US Letter 8.50 by 11.00 inches

Orientation: ☒ Portrait ☐ Landscape

Paper Handling

☒ Collate pages

Pages to Print: All pages

Page Order: Automatic

☐ Scale to fit paper size

Destination Paper Size: Suggested Paper: US Letter

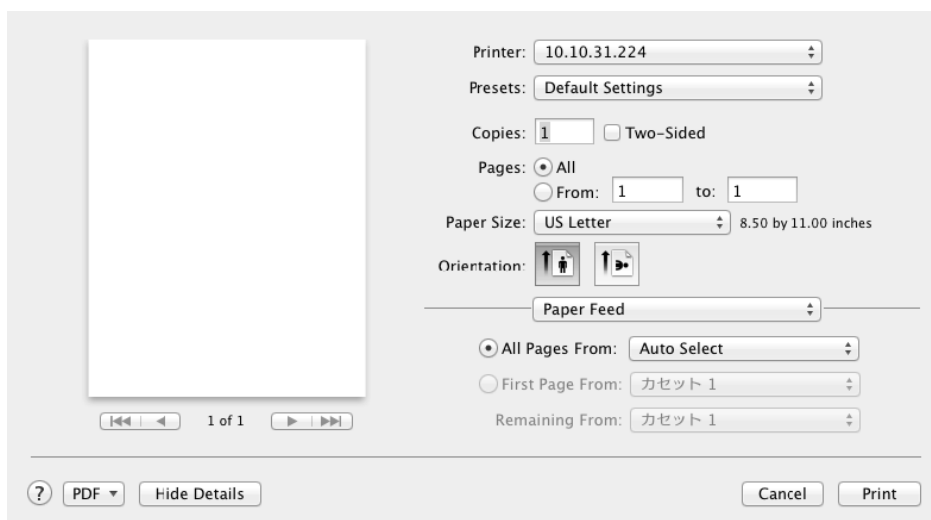
☐ Scale down only

1 of 1

? PDF Hide Details Cancel Print

Paper Feed Pane

The **Paper Feed** pane provides settings for selecting the paper input tray.



Printer: 10.10.31.224

Presets: Default Settings

Copies: 1 ☐ Two-Sided

Pages: ☒ All
☐ From: 1 to: 1

Paper Size: US Letter 8.50 by 11.00 inches

Orientation: ☒ Portrait ☐ Landscape

Paper Feed

☒ All Pages From: Auto Select

☐ First Page From: カセット 1

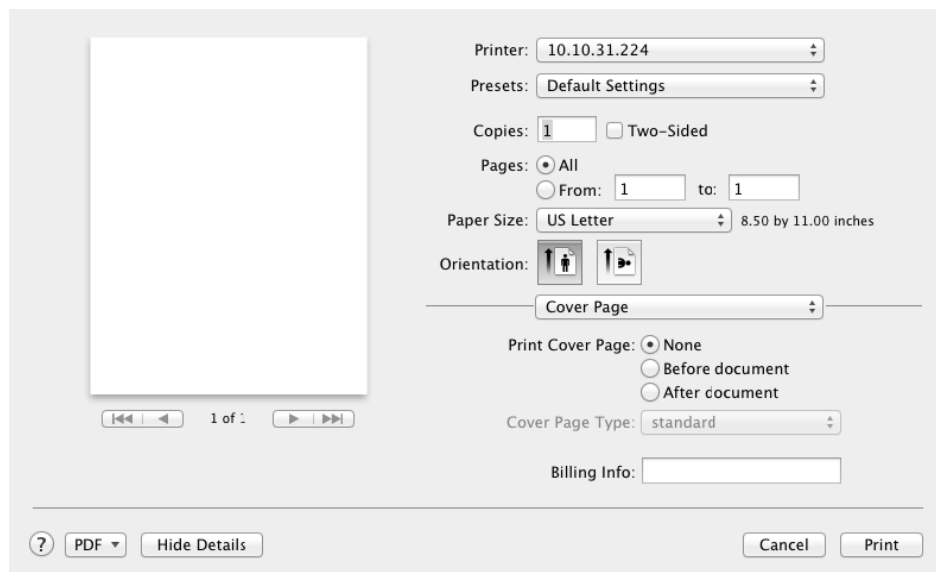
Remaining From: カセット 1

1 of 1

? PDF Hide Details Cancel Print

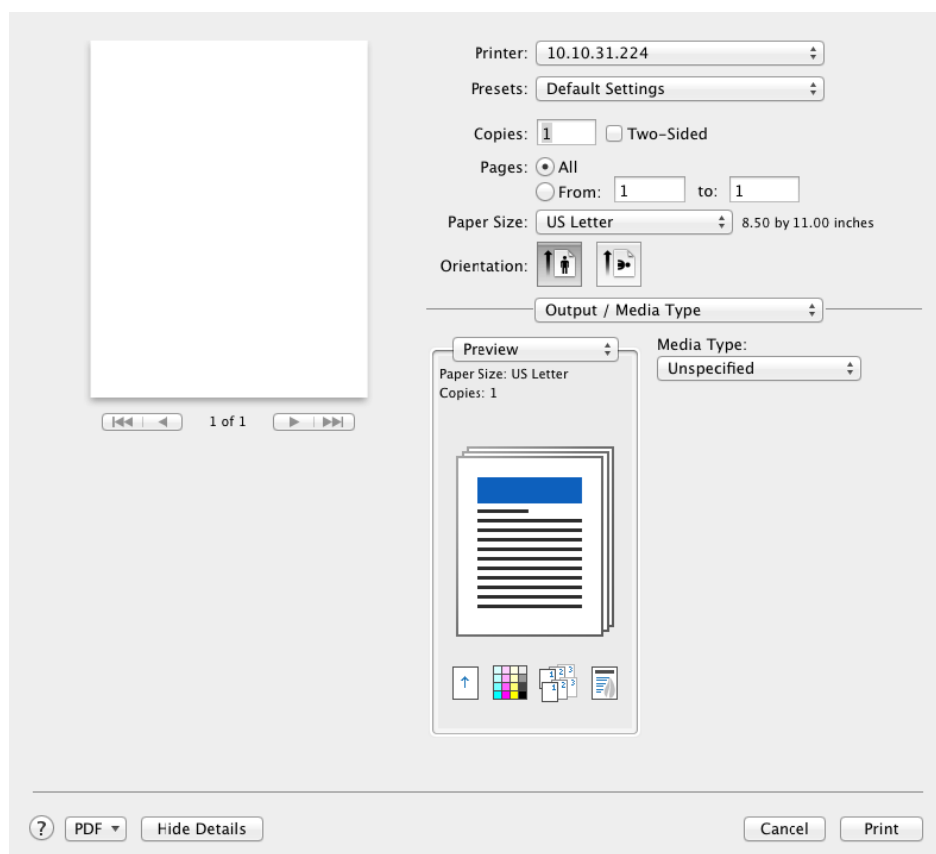
Cover Page Pane

The **Cover Page** pane provides settings for printing a cover page with predefined types and/or billing information.



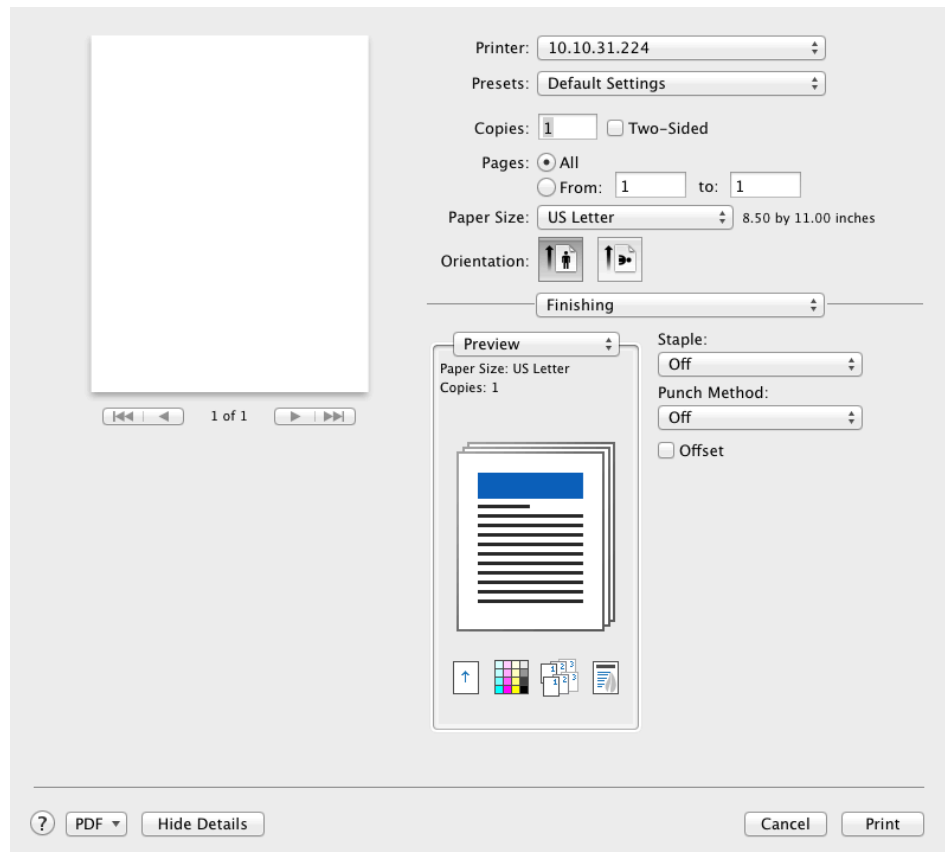
Output / Media Type Pane

The **Output / Media Type** pane provides settings for media type for the print job.



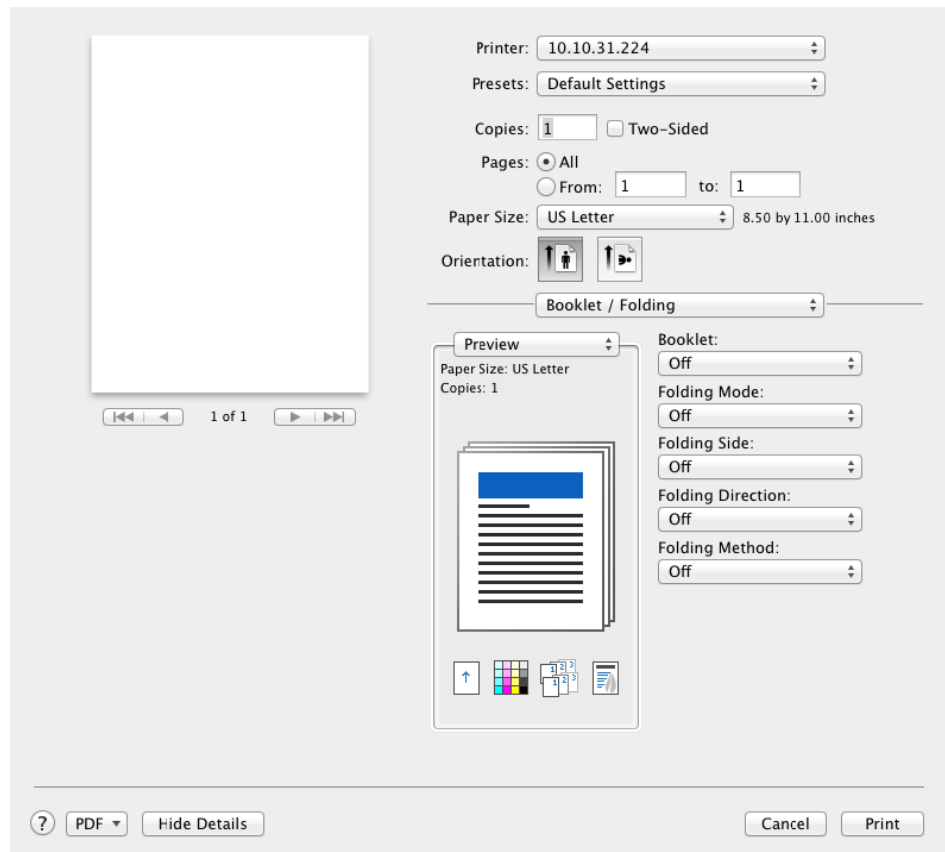
Finishing Pane

The **Finishing** pane provides settings for staple, punch method, and offset.



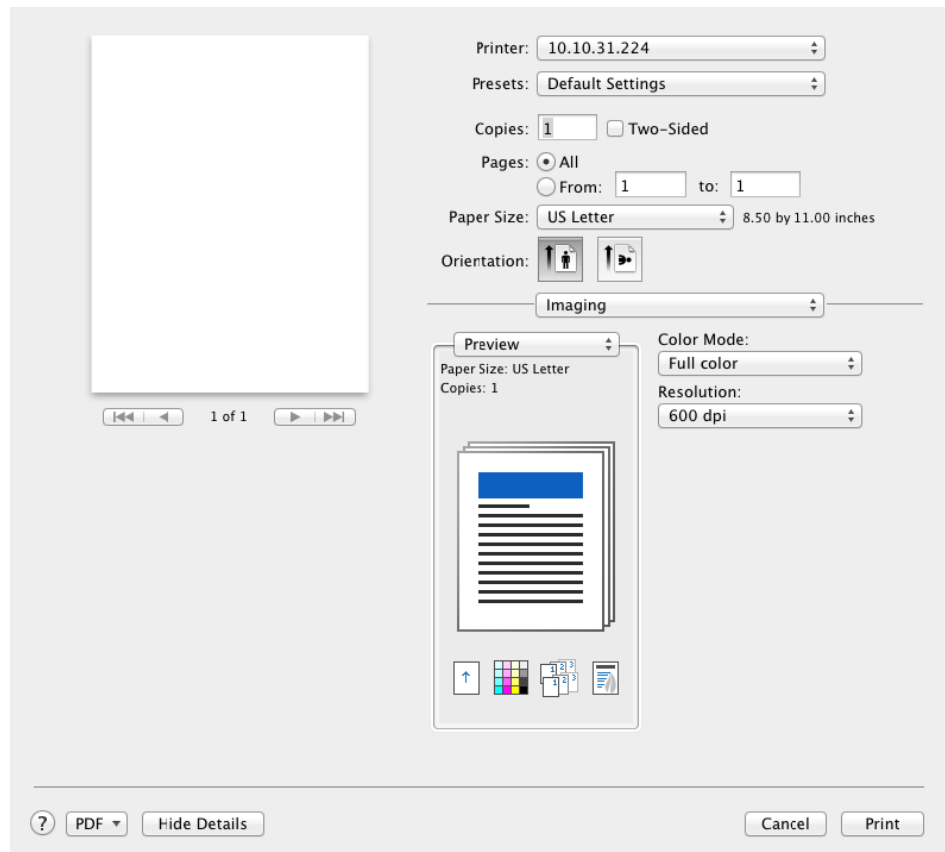
Booklet / Folding Pane

The **Booklet / Folding** pane provides settings for booklet, folding mode, folding side, folding direction, and folding method.



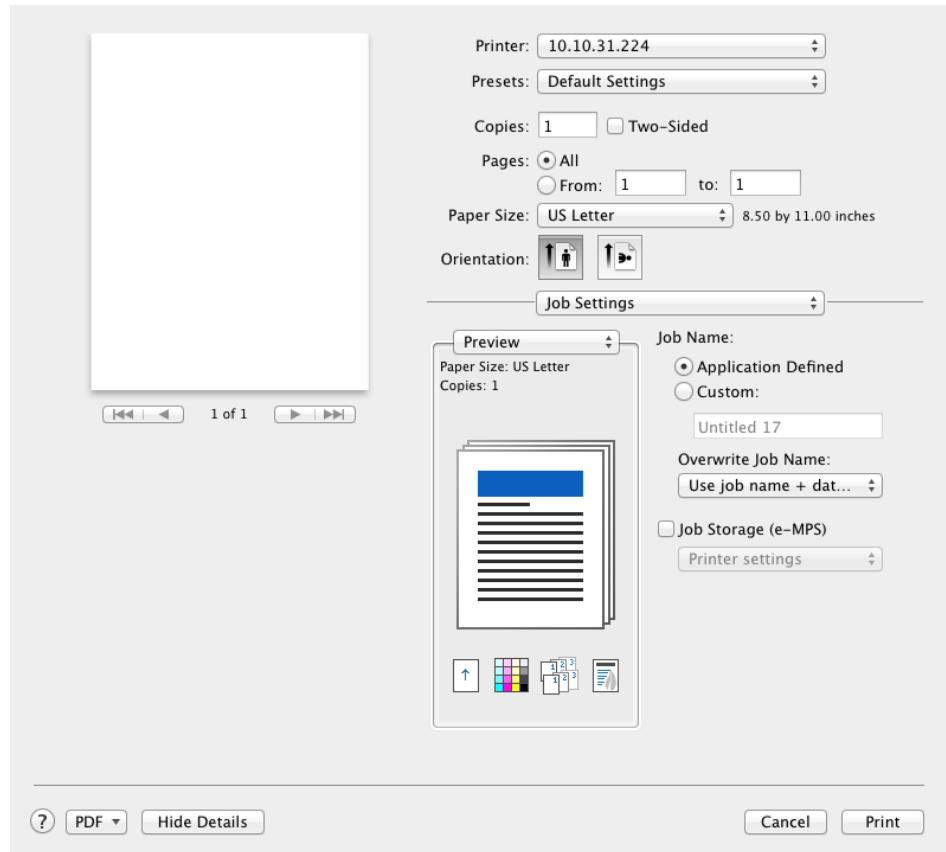
Imaging Pane

The **Imaging** pane provides settings for color mode and resolution.



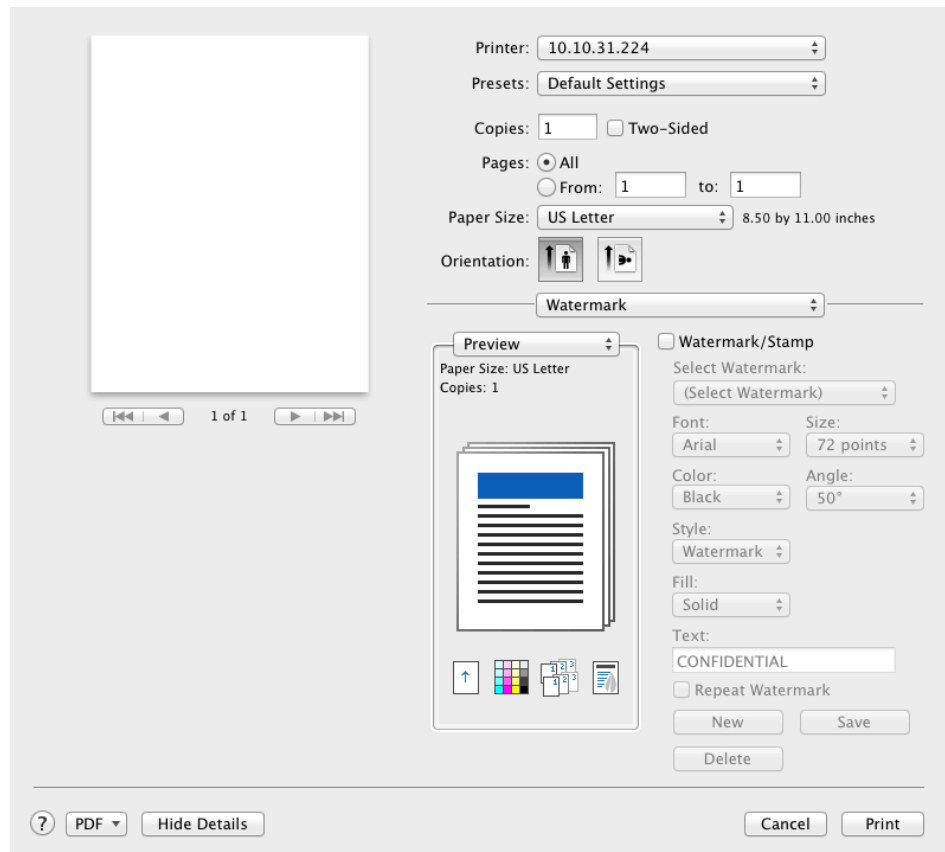
Job Settings Pane

The **Job Settings** pane displays predefined settings for job name and job storage. You can change the **Collate**, **Quick copy**, **Proof and hold**, **Job storage**, **Private print**, and **Custom box** settings.



Watermark Pane

The **Watermark** pane displays settings for watermark or stamp with specific settings such as text, font, size, color, angle, style, fill, and repeat.



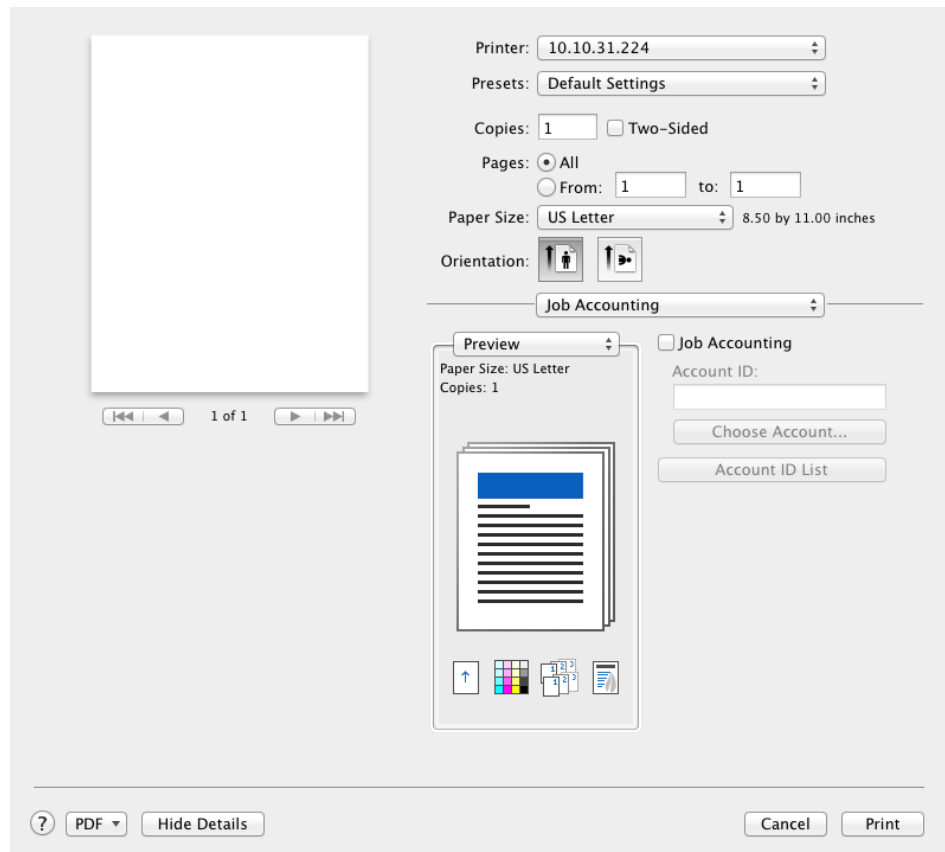
User Login Pane

The **User Login** pane provides settings for specific user login and prompt for user login.

The screenshot shows a 'PDF Mode Settings' dialog box. On the left is a large white rectangular area representing the page. Below it are navigation buttons (back, forward, first, last) and the text '1 of 1'. To the right of the page area are various settings: 'Printer:' with a dropdown showing '10.10.31.224'; 'Presets:' with a dropdown showing 'Default Settings'; 'Copies:' with a text box '1' and a checkbox 'Two-Sided'; 'Pages:' with radio buttons for 'All' (selected) and 'From: 1 to: 1'; 'Paper Size:' with a dropdown showing 'US Letter' and the dimensions '8.50 by 11.00 inches'; 'Orientation:' with two icons (portrait and landscape); 'User Login' with a dropdown; a 'Preview' section showing a thumbnail of the document with 'Paper Size: US Letter' and 'Copies: 1'; and a 'User Login' section with a checkbox 'User Login' (unchecked), radio buttons for 'Use Specific Name' and 'Prompt for Name' (selected), and input fields for 'Name:' and 'Password:'. At the bottom are buttons for '?', 'PDF', 'Hide Details', 'Cancel', and 'Print'.

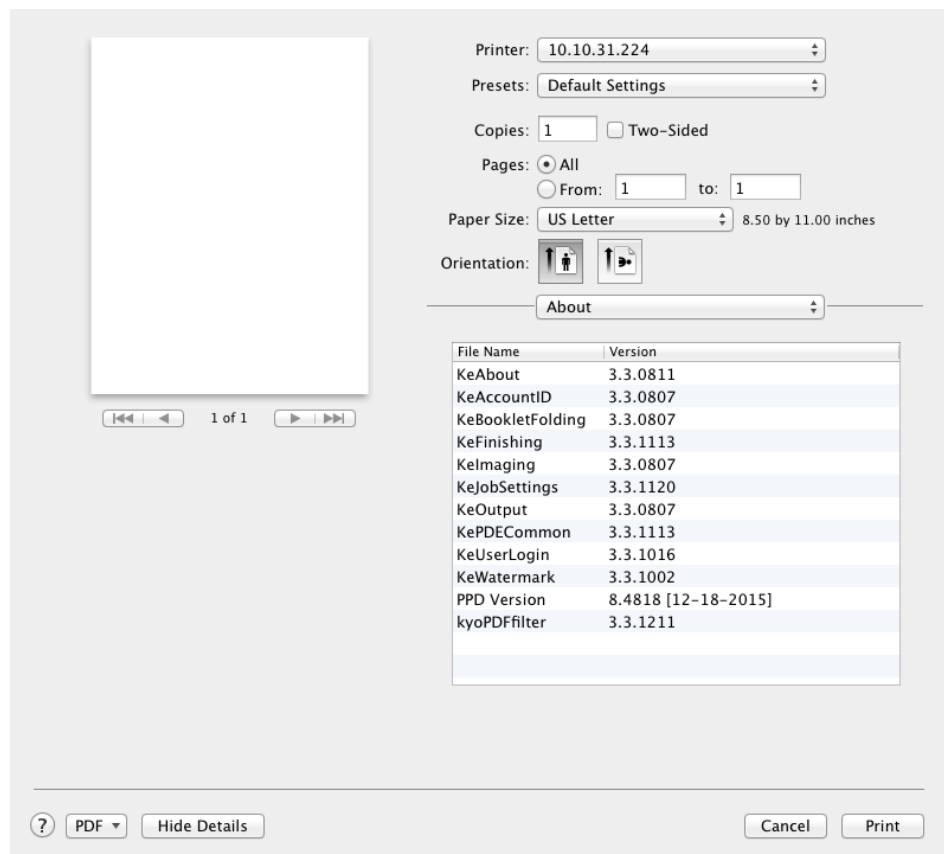
Job Accounting Pane

The **Job Accounting** pane provides settings for account ID.



About Pane

The **About** pane displays information about the current driver.



Supported Print Features

The following table lists all the print features supported by the driver. Default settings are indicated with an asterisk (*).

Color Mode (for color models only)	Color*
	Black & White
Resolution	300 DPI (for monochrome models only)
	600 DPI*

— continued

Media Type	Unspecified*
	Auto media selection
	Plain
	Transparency
	Preprinted
	Labels
	Bond
	Recycled
	Vellum
	Rough
	Letterhead
	Color
	Prepunched
	Envelope
	Cardstock
	Coated
	Thick
	High quality
	Custom type 1-8
Booklet	Off*
	Left edge binding
	Right edge binding
Folding Mode	Off*
	First page on inside
	First page on outside
Folding Side	Off*
	Bi-Fold
	Tri-Fold
Folding Direction	Off*

— continued

	Right to left / Bottom to top
	Left to right / Top to bottom
Folding Method	Off* Fold every 1 sheet ... Fold every 5 sheets
Staple	Off* Center Front Rear
Staple Method	Off* Staple every 2 sheets ... Staple every 65 sheets (70 for JA models)
Punch Method	Off* 2 holes (US) 2 holes (EUR) 3 holes
Offset	(By default, this checkbox is not selected)
Job Settings	Printer Settings* Off Collate Quick copy Proof and hold Job storage Private print Custom box
Job Accounting	(By default, this checkbox is not selected) Account ID

— continued

User Login	(By default, this checkbox is not selected) Use Specific Name Prompt for Name
Watermark	(By default, this checkbox is not selected) Watermark/Stamp

4 PDF Comparison with KPDL

In the following table, "X" indicates that the feature is fully supported by the driver and "O" indicates a limited feature. Actual selections vary by device model.

Mac 3.3 Drivers	PDF Driver	KPDL Driver
Basic Features		
Paper Source	X	X
Border Line		X
Paper Size	X	X
Custom Paper Size	Min: Height = 5.85 in./148.6 mm Width = 3.85 in./97.8 mm Max (A3/Ledger models): Height = 48 in./1219.2 mm Width = 11.69 in./297 mm Max (A4/Letter models): Height = 14 in./355.6 mm Width = 8.5 in./215.9 mm	Min: Height = 5.85 in./148.6 mm Width = 3.85 in./97.8 mm Max (A3/Ledger models): Height = 48 in./1219.2 mm Width = 11.69 in./297 mm Max (A4/Letter models): Height = 14 in./355.6 mm Width = 8.5 in./215.9 mm
Pages per sheet	O (1,2,4)	X
Duplex	X	X
Collate	X	X
Scale to Fit	X	X
Cover Page (System Provided)	X	X
Output Features		
Output Bin		X
Media Type	X	X
Rotate Collate		X
Imaging Features		

— continued

Mac 3.3 Drivers	PDF Driver	KPDL Driver
Color Mode	X	X
Gloss Mode		X
Print Quality/Resolution	X	X
Color Reproduction		X
Print Grays with Black Toner		X
Halftone Screen		X
EcoPrint		X
Color Conversion		X
Trapping		X
CIE Optimization		X
Composite Overprint		X
Adjustment Features		
Monochrome Adjustment (Lightness, Contrast)		X
Color Adjustment (HSL)		X
Color Adjustment (Color Balance)		X
Job Settings Features		
Job Name	X	X
Overwrite Job Name	X	X
Job Storage	X	X
Job Email Notification		X
Job Accounting Features		
Account ID	X	X
Watermark Features		
Watermark	X	X
Stamp	X	X

— continued

Mac 3.3 Drivers	PDF Driver	KPD L Driver
Publishing Features		
Cover Mode		X
Transparency Interleaving		X
Page Insert		X
User Login Features		
Use Specific Name	X	X
Prompt for Name	X	X
Booklet Folding Features		
Booklet	X	X
Booklet Fold		X
Folding Mode	X	X
Folding Side	X	X
Folding Direction	X	X
Folding Method	X	X
Finishing Features		
Staple	X	X
Staple Method		X
Punch Method	X	X
Finishing Edge		X
Job Offset	X	X
Rotate 180°		X
Other Features		
Super Watermark		X
Banner Print		X
Installable Options		
Paper Feeder	X	X
Duplex Unit		X
Document Finisher	X	X

— continued

Mac 3.3 Drivers	PDF Driver	KPDL Driver
Mailbox		X
Multi Tray		X
Punch Unit	X	X
Folding Unit	X	X
Job Separator		X
Optional Disk	X	X
Memory		X
Fonts		
System Fonts	X	X
Device Fonts		

