

KMnet Policy Manager 1.0

FAQ

Version 1 - September 29th, 2011



Output Management & Security

System Requirements

Kyocera printers and multifunction printers

FW support schedule	Devices	from FW Version
Supported @ launch	TASKalfa 3500i, 4500i, 5500i, 6500i, 8000i	from release FW
Supported @ launch	TASKalfa 3050ci, 3550ci, 4550ci, 5550ci, 6550ci, 7550ci	from release FW
09/2011	TASKalfa 300i	08.00.0010
09/2011	TASKalfa 420i, 520i	08.00.0010
09/2011	TASKalfa 250ci, 300ci, 400ci, 500ci	12.00.0020
09/2011	TASKalfa 552ci	06.00.0010
will come with KM P M 1.1	TASKalfa FS-6025MFP, FS-6030MFP,	na.
will come with KM P M 1.1	TASKalfa FS-C8020MFP, FS-C8025MFP,	na.
09/2011	FS-C2026MFP+, FS-C2126MFP+,	under prep.
09/2011	FS-C2526MFP, FS-C2626MFP,	03.00.0010
09/2011	FS-3040MFP+, FS-3140MFP+	under prep.
09/2011	FS-3540MFP, FS-3640MFP	03.00.0010
Supported @ launch	FS-1030MFP, FS-1130MFP	from release FW
Supported @ launch	FS-1035MFP, FS-1135MFP	from release FW
09/2011	FS-C8500DN	06.00.0010

Status 27.09.2011

Servers

- Windows Server 2003 SR2, Windows Server 2008, or Windows Server 2008R2¹
- .NET 4.0
- SQL Server Express
- 1 GB of RAM (2GB or more recommended)
- HDD with 200GB free space for spooled files is recommended (may vary by customer based on size and number of print jobs as well as the job expiration interval)

Network

- LAN with 10Mbit/s or better, 100Mbit/s or more recommended for using the Job Spooler Server.

¹ KMnet Policy Manager may work on Windows Vista and Windows 7, but these configurations are not recommended.

Supported Card Readers and Types

Card Reader	Card Type	Item Number (SAP)
USB Card Reader Mifare	Mifare Mini, Mifare 1K, Mifare 4k, Mifare Plus, Mifare Ultralight, Mifare DESFIRE (SN/UID only), ISO14443-A Tags	870LS95001
USB Card Reader HIDprox	HIDprox	870LS95002
USB Card Reader HID iClass	HID iClass	870LS95003
USB Card Reader LEGIC	LEGIC prime, LEGIC advant	870LS95004
USB Card Reader Multi ISO	ISO14443-A => 870LS95001 Mifare, Mifare DESFIRE, ISO14443-B Tags, ISO15693 Tags, I-CODE, Tag-it™, Inside Pico Pass, EM4135, SR176, SRIX4K, LRI 64	870LS95005
USB Card Reader Multi125	UNIQUE, EM4100, EM4102, HITAG-1, HITAG-2, HITAG-S256, HITAG-S2048, T5557, Q5, EM4550, EM4150	870LS95006
USB Card Reader Inditag	INDALA flexpass	870LS95007

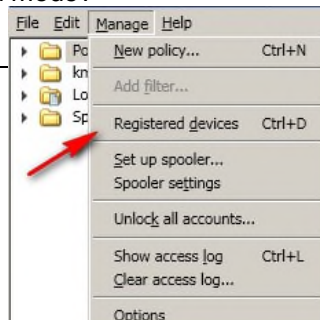
Note: Additional Card Reader technologies may be available on request!

FAQs

Supported Configurations

- 1 Active Directory server
- Up to 1,000 users and accounts (IDs)
- Up to 1,000 Active Directory users
- Up to 100 simultaneous logins
- Up to 20 policies
- Up to 1,000 local users
- Up to 20 local groups

Question	Answer
When the Active Directory (AD) server goes down, can the user still login to KMPM?	No, he can't. For security reasons, KMnet Policy Manager doesn't keep AD information. In this case the user can login as a local user only.
What driver should be used for Secure Print?	KX DRIVER (mandetory)
Do I have to perform user settings within the KX Driver?	Yes, user name, password needs to be set
Can the user who doesn't have rights to print in colour still perform the colour print operation?	The user can start the colour print operation, but the job will be rejected by the device and automatically deleted in the print quque. As a result, the user can't get any colour output.
When a BW job is printed from a colour device, how does the counter change?	Since the job contains information on colour/BW, the BW counter will be incremented.
What happens when the user wants to print an A3 job from an A4 machine?	It depends on the device setting. This is not the issue of KMnet Policy Manager, but the result is the same as without using KMnet Policy Manager. With the default setting of the device, the job will be printed in A4.
What is the file format to export the access log?	XML or CSV
Are there known issues with SQL Server Express 2008 R2?	If the installation is not done with default settings (e.g.: default instance name), KMPM will install but not run (not possible to connect to Policy Manager Server).
Do I have to register devices running KMnet Policy Manager in Trail mode?	No, to register devices within a trail installation is not required. The TAB Manage -> Register devices will be only available within the licensed software



Licensing

There are 6 kinds of base licenses and 5 kinds of upgrade licenses.

Base Licenses	Explanation
KMPM 5 Devices	Up to 5 devices can be registered and managed.
KMPM 10 Devices	Up to 10 devices can be registered and managed.
KMPM 20 Devices	Up to 20 devices can be registered and managed.
KMPM 30 Devices	Up to 30 devices can be registered and managed.
KMPM 50 Devices	Up to 50 devices can be registered and managed.
KMPM 100 Devices	Up to 100 devices can be registered and managed.

Upgrade Licenses	Explanation
KMPM Upgrade 5 to 10 Devices	The license upgrades from 5 devices to 10 devices.
KMPM Upgrade 10 to 20 Devices	The license upgrades from 10 devices to 20 devices.
KMPM Upgrade 20 to 30 Devices	The license upgrades from 20 devices to 30 devices.
KMPM Upgrade 30 to 50 Devices	The license upgrades from 30 devices to 50 devices.
KMPM Upgrade to 100 Devices	The license upgrades from 50 devices to 100 devices.

Upgrade Process

KMnet Policy Manager doesn't allow to combine licenses. For example, if a customer has a 10 Devices License and wants to add another 10 devices, he cannot purchase another 10 Devices License and combine both. He needs to purchase the Upgrade License (10 to 20 License).

Trial license

KMnet Policy Manager can be used with full functionality for 90 days. After this period KMPM will stop working unless it is registered. Note that a user cannot reinstall a trial license on a machine with an expired trial license.

Product Registration

In order to activate KMnet Policy Manager, the customer needs to have the Product ID that was delivered by e-mail and the device number of the server where KMnet Policy Manger is installed.

The customer can get the device number of the server with the following procedure:

1. Launch the KMnet Policy Manager
2. Look for the Device Number in Help menu > Version > License button

When Product ID and Device Number are ready, please get license key by accessing the license system and inputting the necessary information.

The customer or dealer can then generate an activation key for this installation using the Kyocera Mita Europe license server:

http://www.kyoceramita.eu/index/service/product_registration.html

After getting the license key, please activate the KMnet Policy Manager by inputting the license key into the license screen of the program. After the customer has entered the activation key in the KMnet Policy Manager Activation dialog, KMnet Policy Manager is licensed and can be used without restrictions.

The difference between the activation of existing MFP activation such as Card Authentication Kit and activation of KMnet Policy Manager is that activation of KMnet Policy Manager uses the device number of the server PC, but activation of MFP function uses MFP machine number.

In both cases, product ID on the license certificate is used for activation.

New versions and major upgrades may require a new license and activation key.

EMC Product Marketing

KYOCERA MITA EUROPE B.V.
Branch Office Germany
EUROPEAN MARKETING CENTER (EMC)
Otto-Hahn-Strasse 12 * D-40670 Meerbusch * Germany

Phone: +49(0) 2159 928-525 * Fax: +49(0) 2159 928-599
e-mail: gerd.schmidt@kyoceramita-europe.com
web: <http://www.kyoceramita-europe.com>

All information as of Sept. 29th, 2011