

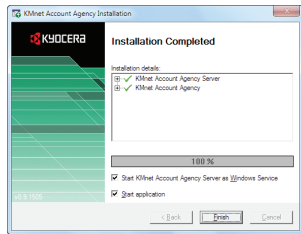
# KMNET POLICY MANAGER - QUICK START GUIDE.

KMnet Policy Manager lets you manage authentication and authorization of your local network users and groups without changing your Active Directory settings. Use this short guide to help you get started.

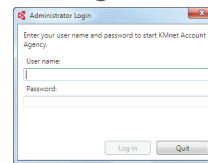
- 1 Set network authentication on the device



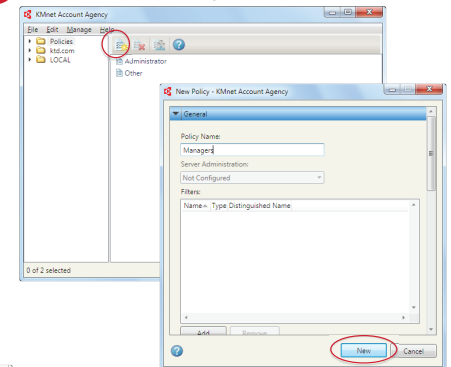
- 2 Install Policy Manager



- 3 Start Policy Manager and log in

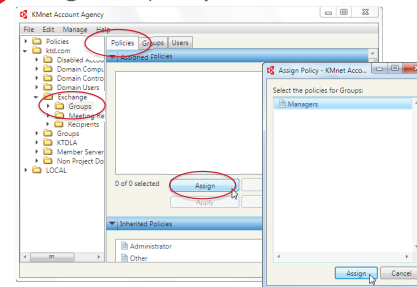


- 4 Add a new policy



Click the New Policy toolbar button, set the policy's properties. Then click New.

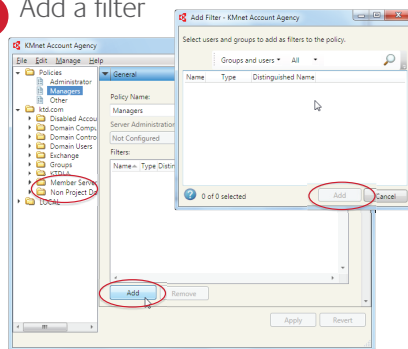
- 5 Assign the policy to a node



Select an Active Directory node, click Assign on the Policies tab, and then select the new policy.

- 6 Add a filter

Policies are applied to specific users and groups using the policy's filter. In the new policy's properties, click Add in the General properties section, to select users and groups for the filter list.



Explore all of KMnet Policy Manager's features in your manual or the program's Help.