

KMnet POLICY MANAGER PRODUCT INFORMATION

KMnet Policy Manager lets you manage device usage in your organization, giving complete control over access to the device and its functions. It provides secure Print&Follow functionality for KYOCERA multifunction devices including encrypted job storage and secure data transmissions. Print policies control authorizations per user or department so that unauthorized or unneeded device usage is prevented.

KMnet POLICY MANAGER AT A GLANCE

- ▶ Manage and control printing, scanning and faxing
- ▶ Authentication and authorization for users and groups
- ▶ Secure printing with AE256 encrypted jobs storage
- ▶ Client viewer for viewing and deleting jobs on the server
- ▶ Integrated with Active Directory
- ▶ Single point of administration
- ▶ Supports up to 100 devices, 1,000 users and 20 groups



- ▶ Control Access
- ▶ Print Securely
- ▶ Manage Device Usage

SECURE OUTPUT

- ▶ All your confidential documents remain confidential
- ▶ Shut down security leaks: Secure your output environment from information theft, hacker attacks and unauthorized access

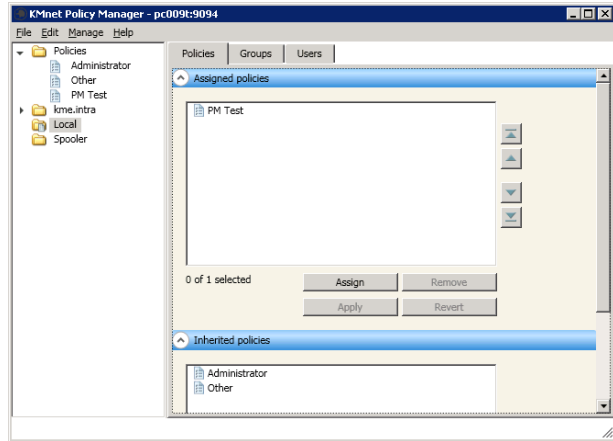
COST SAVING

- ▶ Prevent unauthorized and unneeded device usage
- ▶ Save costs by printing less

KMnet Policy Manager

EASY ADMINISTRATION

With KMnet Policy Manager, it is easy to set rules for each user or department. Define who is allowed to print and copy in colour, and keep track of all output.



▶ CONTROL ACCESS	▶ PRINT SECURELY	▶ MANAGE DEVICE USAGE
<p>User Login</p> <p>Different login options</p> <ul style="list-style-type: none"> ▶ ID card ▶ ID card and password ▶ User name and password <p>Authentication</p> <p>Via Active Directory or KMnet Policy Manager's local database</p> <p>ID Card Reader Support</p> <p>Full support for the complete range of KYOCERA's USB card readers</p>	<p>Print&Follow™</p> <ul style="list-style-type: none"> ▶ Release your print job at any output device simply by swiping your ID card <p>Secure Printing</p> <ul style="list-style-type: none"> ▶ SSL protocol ▶ Secure storage of print jobs on the server using AES 256 encryption ▶ Kerberos authentication for communication between KMnet Policy Manager and AD Server ▶ Safe storage of passwords 	<p>Print policy</p> <p>Defining rules per user or department:</p> <ul style="list-style-type: none"> ▶ Allow/Deny printing ▶ Allow/Deny color printing ▶ Allow/Deny copying ▶ Allow/Deny color copying ▶ Allow/Deny full color copying ▶ Allow/Deny fax sending ▶ Allow/deny scan to email or network ▶ Allow/deny scanning to the document box (device HDD) ▶ Allow/deny scanning to USB memory

MINIMUM SYSTEM REQUIREMENTS

- ▶ Windows Server 2003 SR2
Windows Server 2008 / 2008 R2
- ▶ KX Driver 5.2 or later
- ▶ 1 GB RAM
- ▶ 200 GB free hard disc space
- ▶ LAN with 10 Mbit/s or better
- ▶ SQL Server Express

SUPPORTED DEVICES

- TASKalfa 3500i, 4500i, 5500i, 6500i, 8000i
- TASKalfa 3050ci, 3550ci, 4550ci, 5550ci, 6550ci, 7550ci

Please enquire about latest device support with your Kyocera business partner.

KYOCERA MITA Europe B.V. – Branch Office Germany – Otto-Hahn-Straße 12 – 40670 Meerbusch – Germany
Tel +49 (0) 2159 928-500 – Fax +49 (0) 2159 918-100
www.kyoceramita-europe.com – info@kyoceramita-europe.com

KYOCERA MITA Corporation – 2-28, 1-Chome – Tamatsukuri – Chuo-Ku
Osaka 540-8585 – Japan – www.kyoceramita.com

* KYOCERA does not warrant that any specifications mentioned will be error-free. Specifications are subject to change without notice. Information is correct at time of going to press. All other brand and product names may be registered trademarks or trademarks of their respective holders and are hereby acknowledged. KMnet Policy Manager is a trademark of KYOCERA MITA Europe B.V.

