

# **AutoCAD HDI Driver**

## **User's Manual**

## Index

<b>1.</b>	<b>REGARDING THIS MANUAL .....</b>	<b>2</b>
<b>2.</b>	<b>INSTALLATION METHOD FOR WINDOWS 2000/XP .....</b>	<b>3</b>
2.1.	Extract the compressed HDI Driver file .....	3
2.2.	Add HDI Plotter .....	3
<b>3.</b>	<b>INSTALLATION METHOD FOR WINDOWS VISTA .....</b>	<b>10</b>
3.1.	Extract the compressed HDI Driver file .....	10
3.2.	Add HDI Plotter .....	12
<b>4.</b>	<b>OPERATION OF HDI DRIVER .....</b>	<b>19</b>
4.1.	Print Procedure .....	19
4.2.	Custom Output Setting .....	22

## 1. **Regarding this manual**

This manual explains how to install AutoCAD HDI Driver and how to use it.

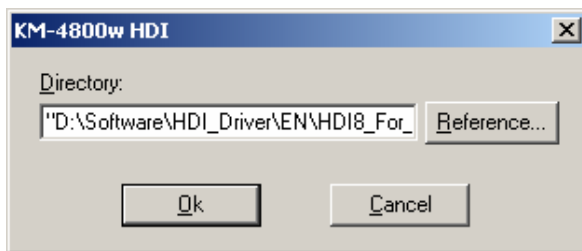
## 2. Installation Method for Windows 2000/XP

### 2.1. Extract the compressed HDI Driver file

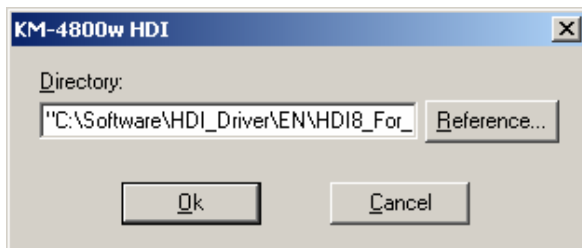
Execute "HDIxx\_KM4800w\_V100E.EXE", which is included in the following shown directory of the disk, \Software\HDI\_Driver\EN\HDIxx\_For\_200x\.

English: select \Software\HDI\_Driver\EN\  
French: select \Software\HDI\_Driver\FR\  
German: select \Software\HDI\_Driver\DE\  
Italian: select \Software\HDI\_Driver\IT\  
Spanish: select \Software\HDI\_Driver\ES\

Select a "HDIxx\_For\_200x" directory corresponding to Auto CAD version on your system.

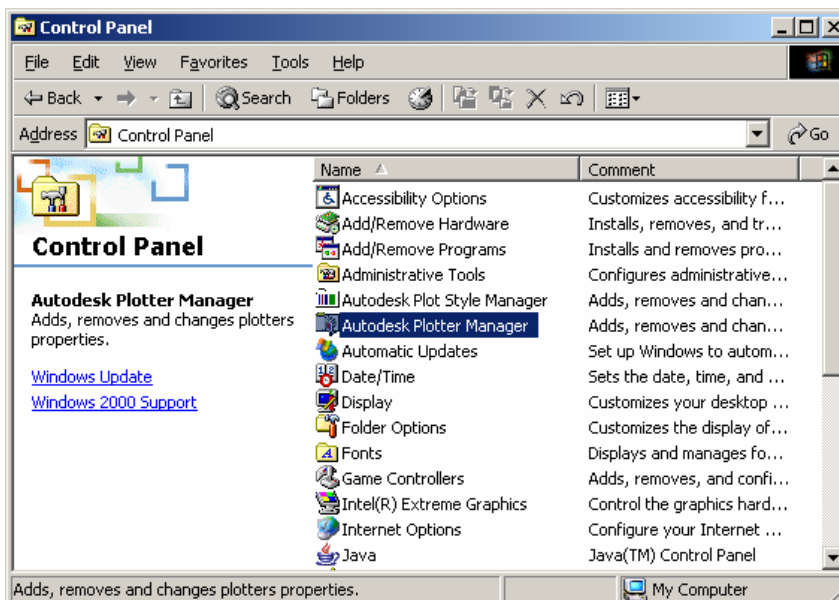


Change C: drive from D: drive, and click [OK].  
HDI Driver is not installed correctly if the Install Directory is CD-ROM Drive.

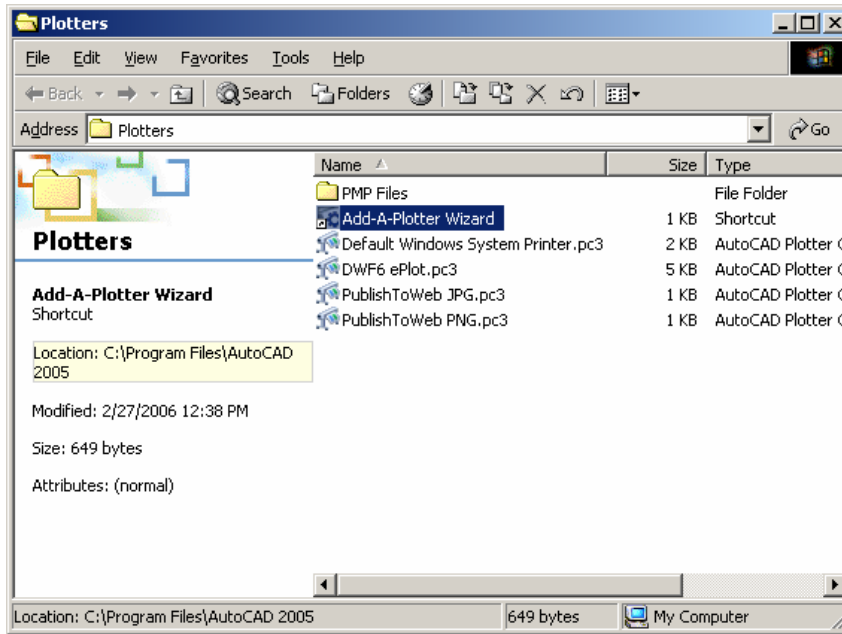


### 2.2. Add HDI Plotter

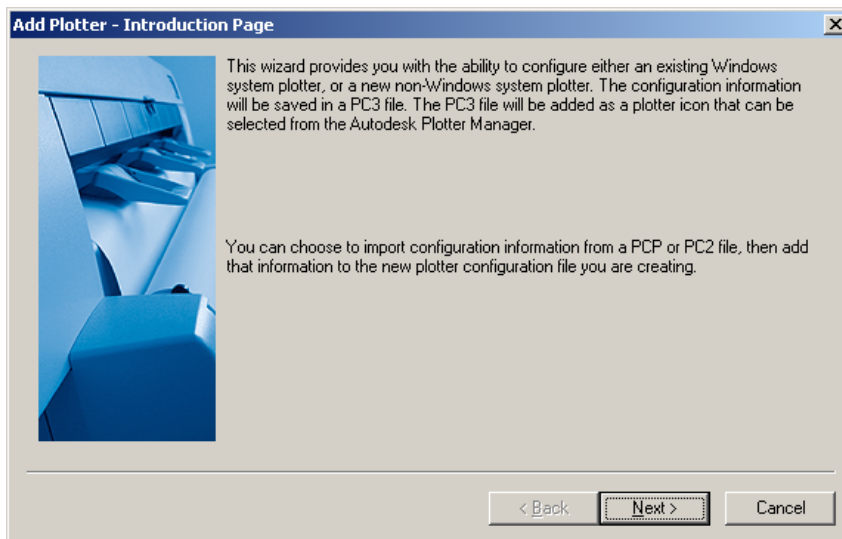
(Open AutoCAD200x before start.)  
Select [Plotter Manager] from [File] of Menu bar.



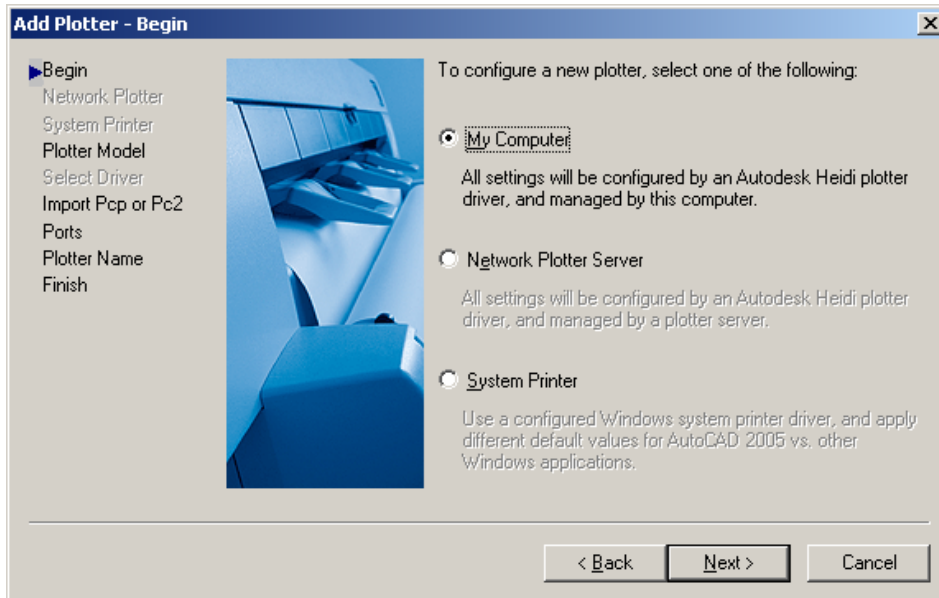
Open [Add-A-Plotter Wizard].



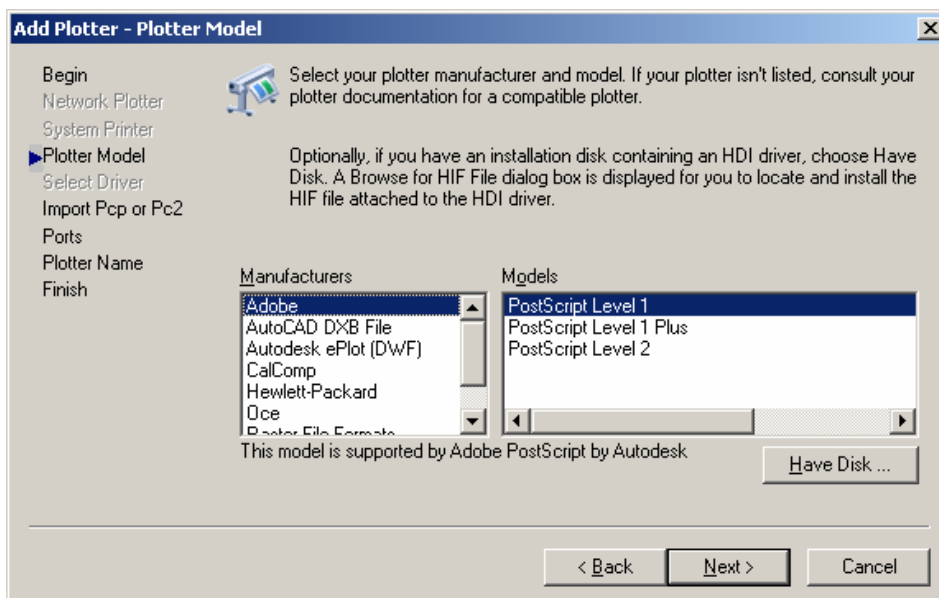
Click [Next].



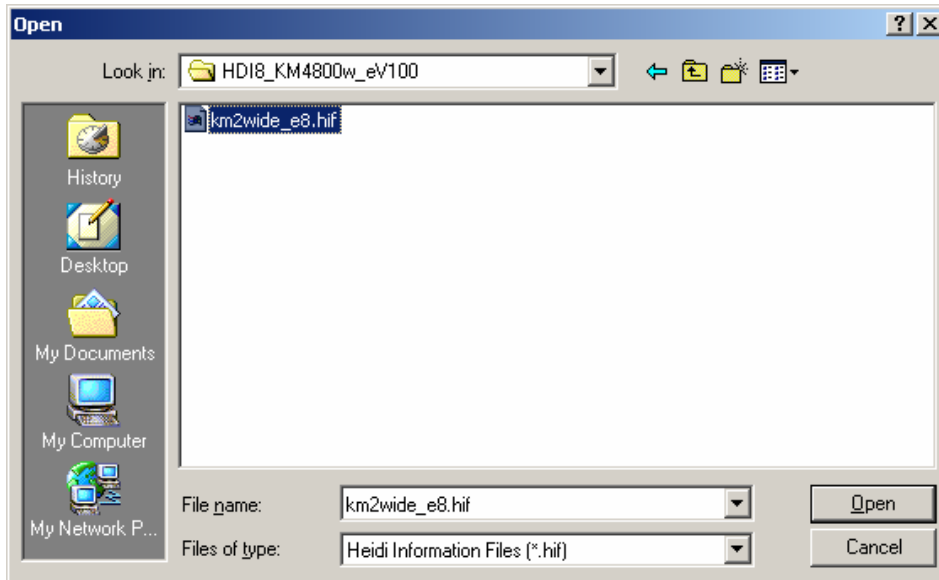
Select "My Computer", and click [Next].



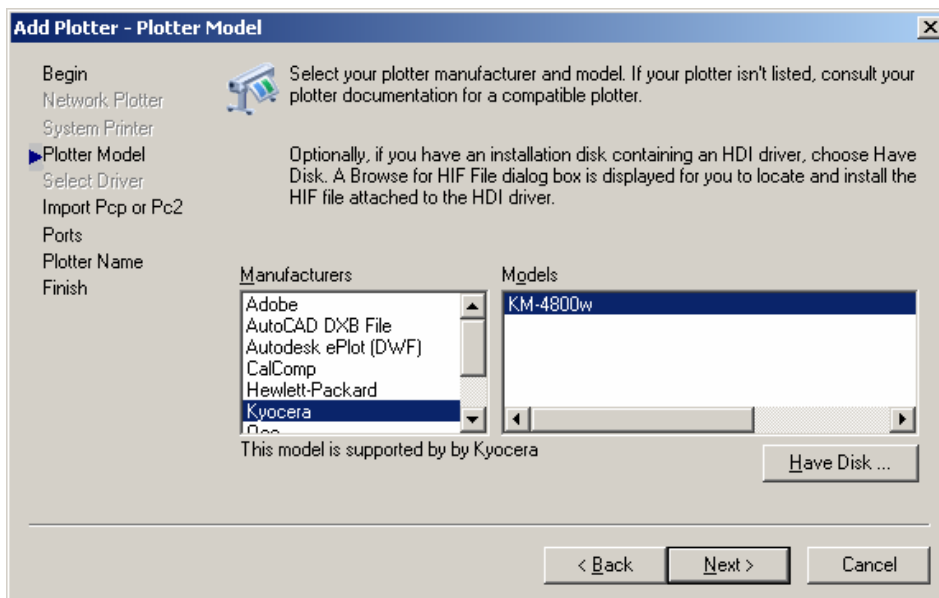
Click [Have Disk].



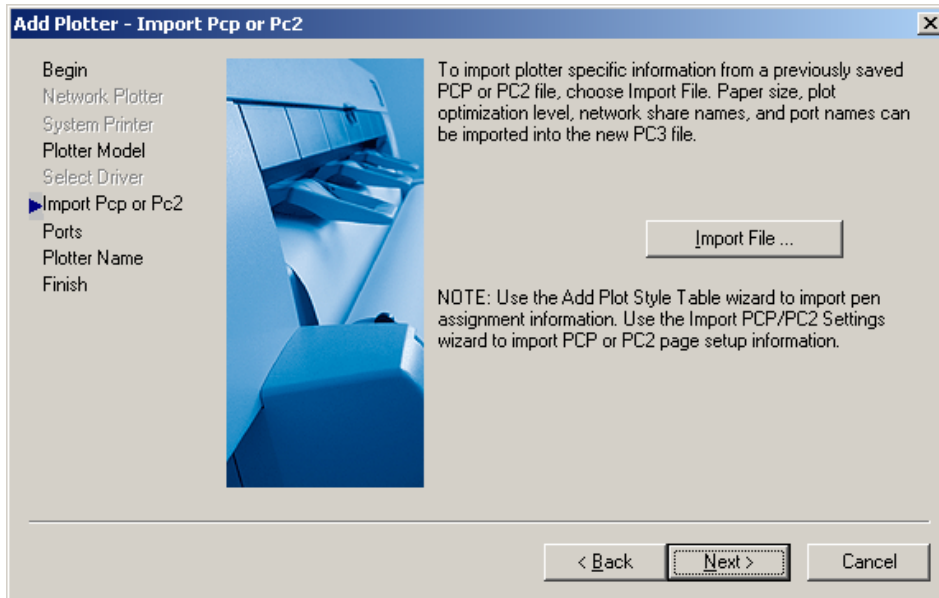
Specify [km2wide\_e8.hif], and then click [Open].



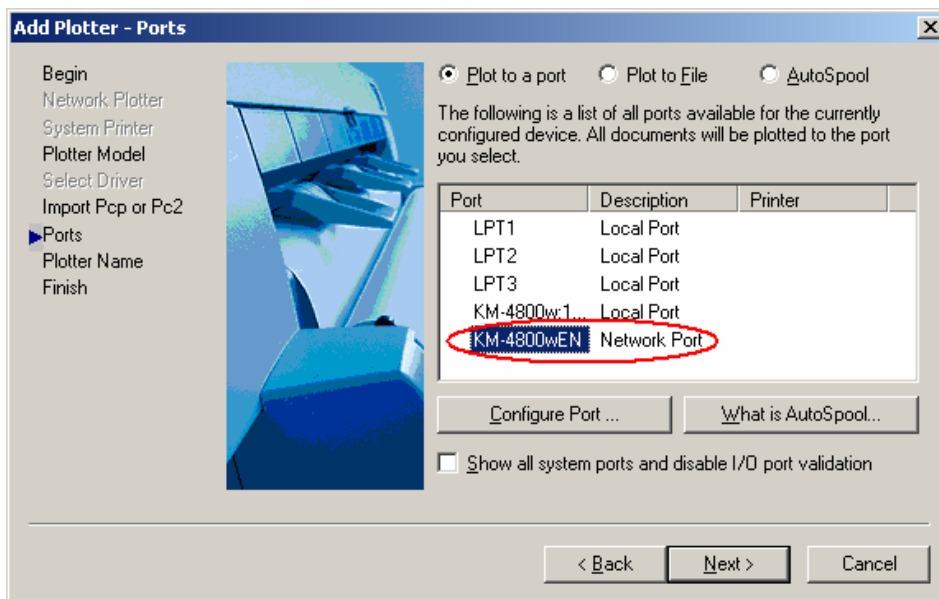
Select model name (KM-4800w) of [Kyocera], and click [Next].



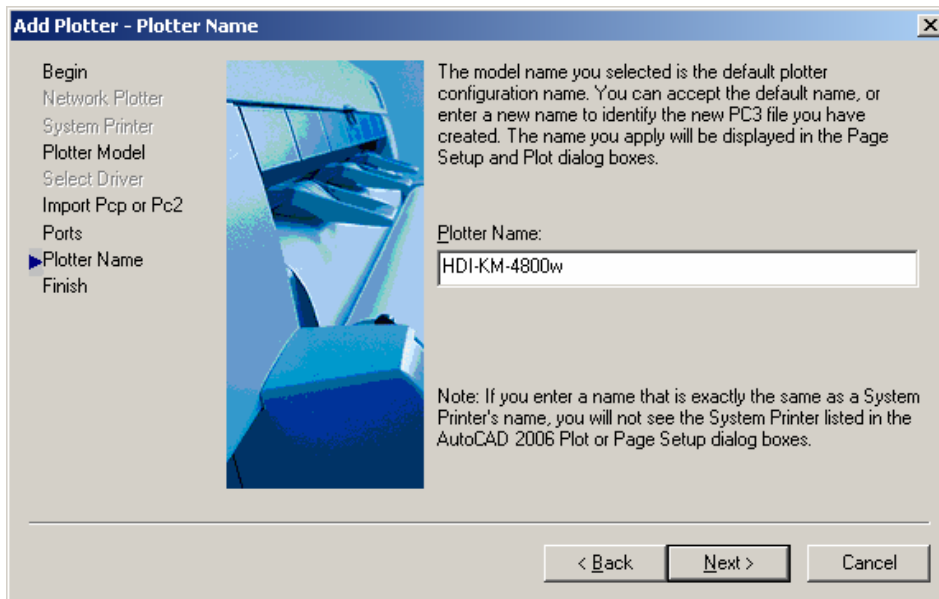
Click [Next].



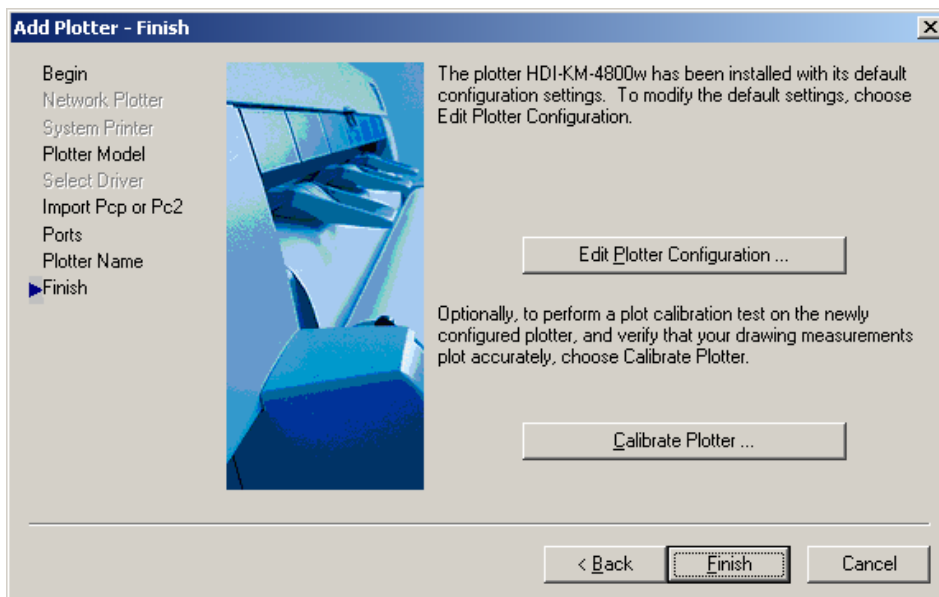
Check “KM-4800wEN Network Port”, and click [Next].  
“KM-4800wEN Network Port” will not appear if the printer driver is not installed.  
Install the printer driver first in this case.



Enter any Plotter Name, and click [Next].  
(For sufficient operation, you can add "HDI-" to the printer name)

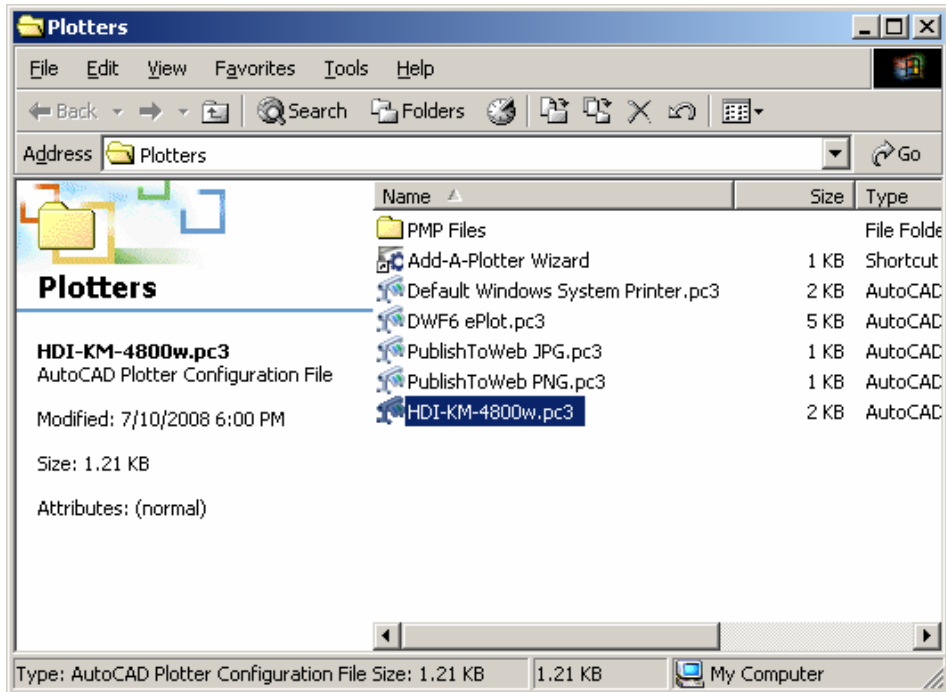


Click [Finish].



Setup is completed.

Added Plotter appears.



To update the HDI Driver, start the Auto Desk Plotter Manager under the Control Panel, uninstall the HDI Driver, and install the update version of HDI Driver.

### 3. Installation Method for Windows Vista

**NOTE:**

When you use KM-4800w as a HDI plotter on Windows Vista, first an administrative user must install HDI printer driver.

Without doing so the general user cannot add KM-4800w as a HDI plotter.

If a general user attempts to add KM-4800w on [Run as administrator], a plotter “KM-4800w” will be added to the administrator, not to the user.

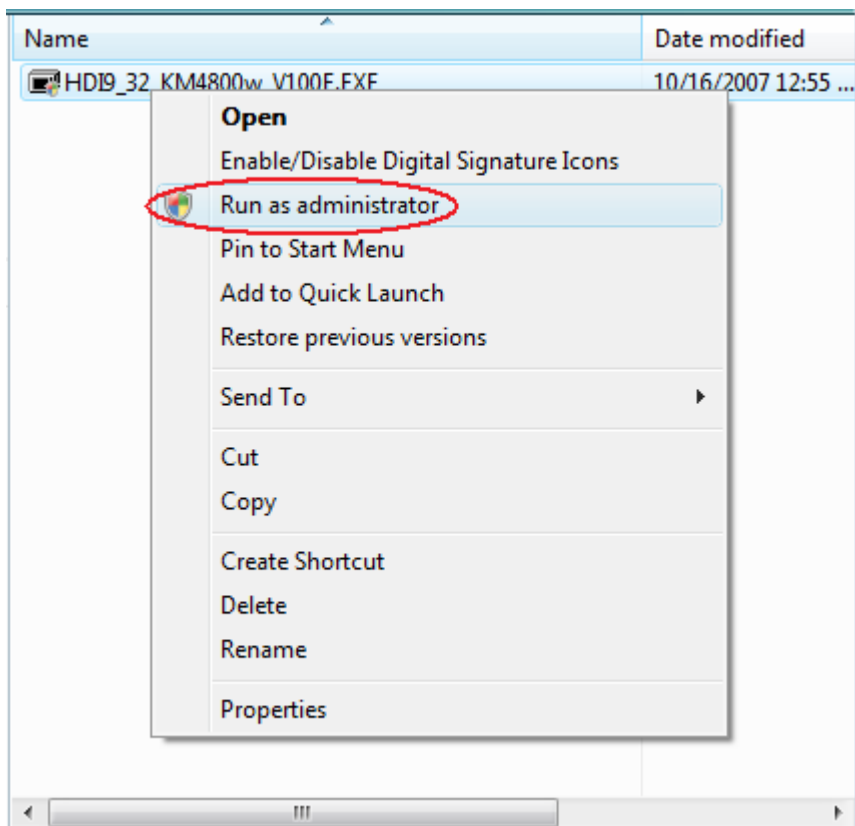
#### 3.1. Extract the compressed HDI Driver file

Execute “HDI9\_xx\_KM4800w\_V100E.EXE”, which is included in the following shown directory of the disk, \Software\HDI\_Driver\EN\HDI9\_xx\_For\_200x\_xxBit\.

- English: select \Software\HDI\_Driver\EN\
- French: select \Software\HDI\_Driver\FR\
- German: select \Software\HDI\_Driver\DE\
- Italian: select \Software\HDI\_Driver\IT\
- Spanish: select \Software\HDI\_Driver\ES\

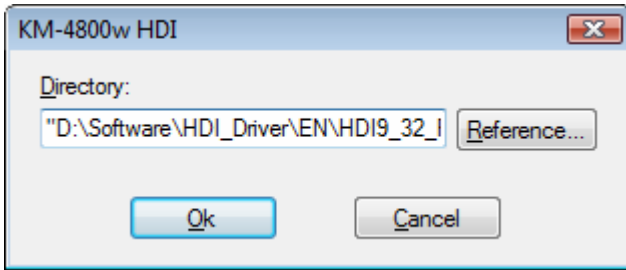
Select a “HDI9\_xx\_For\_200x\_xxBit” directory corresponding to Auto CAD version on your system.

Right-click on the .exe file and select [Run as administrator].

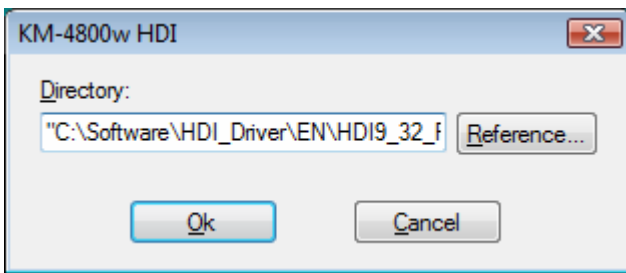


[A program needs your permission to continue] will appear. Click “Continue”.

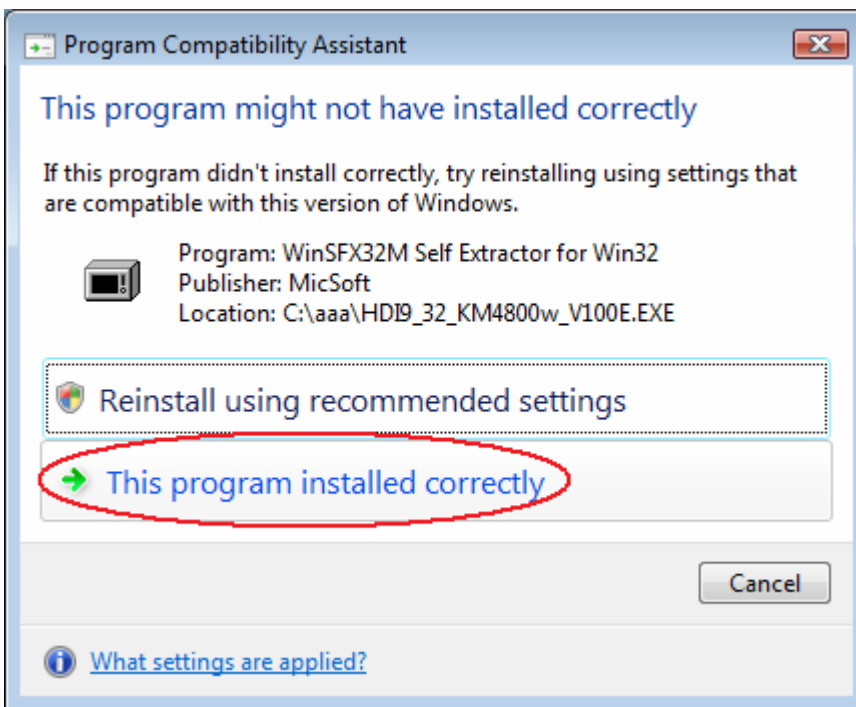
A window appears and asks the installation destination.



Change C: drive from D: drive, and click [OK].  
HDI Driver is not installed correctly if the Install Directory is CD-ROM Drive.



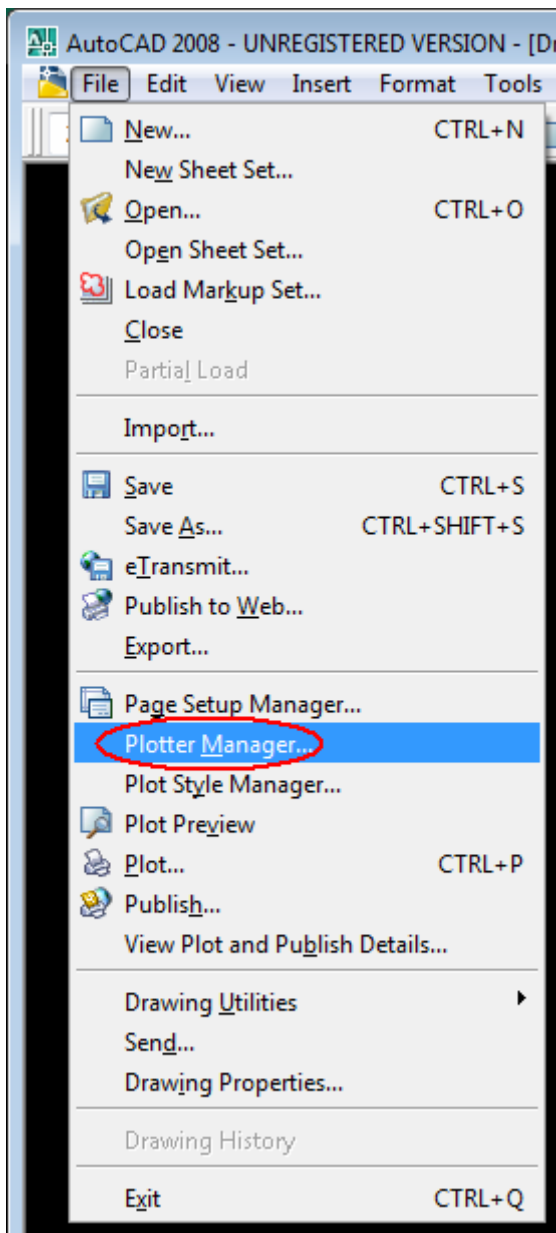
Program Compatibility Assistant appears. Click [This program installed correctly].



### 3.2. Add HDI Plotter

Launch AutoCAD 2008.

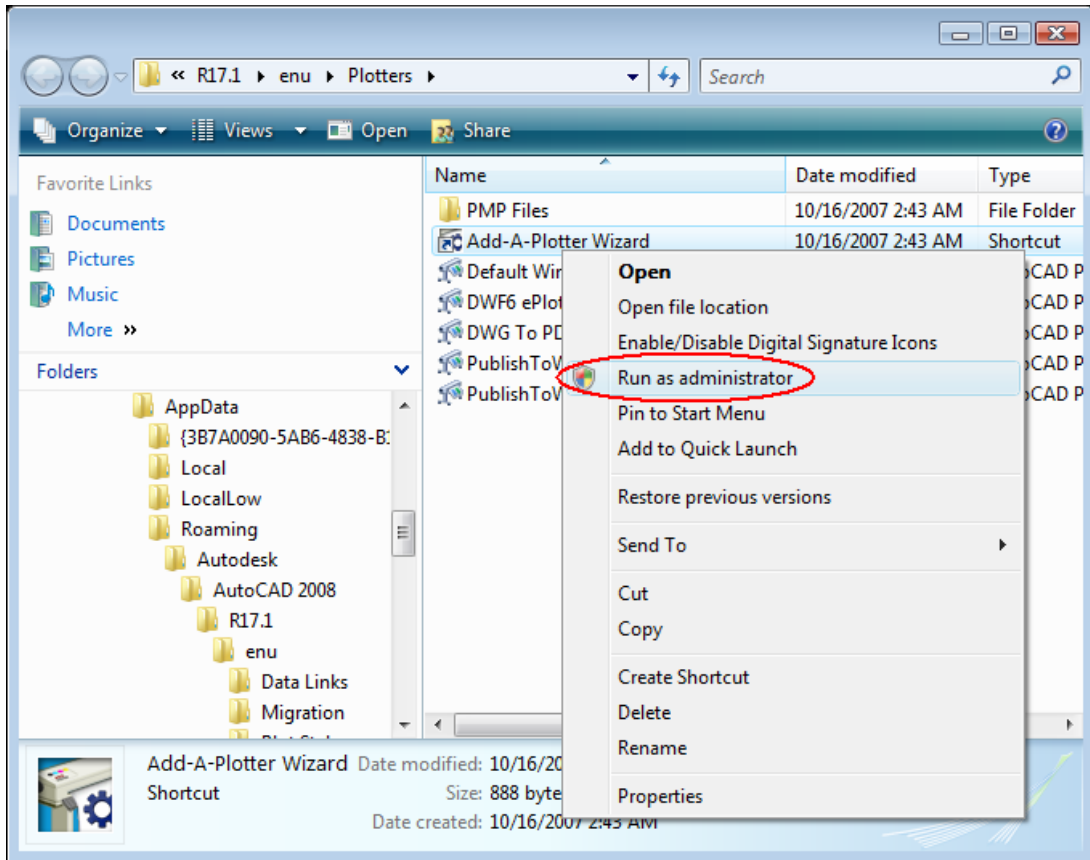
Select [Plotter Manager...] from [File] of Menu bar.



Select [Add-A-Plotter Wizard]. Right-click on it and select [Run as administrator].

**NOTE:**

For a general user, select [Open], not [Run as administrator].

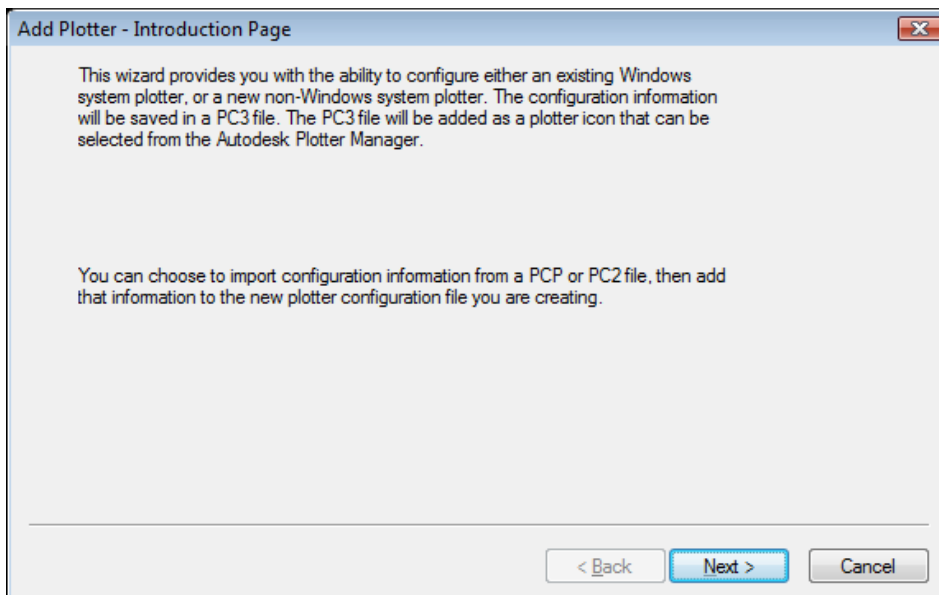


[A program needs your permission to continue] may pop after selecting [Run as administrator]. Click [Continue].

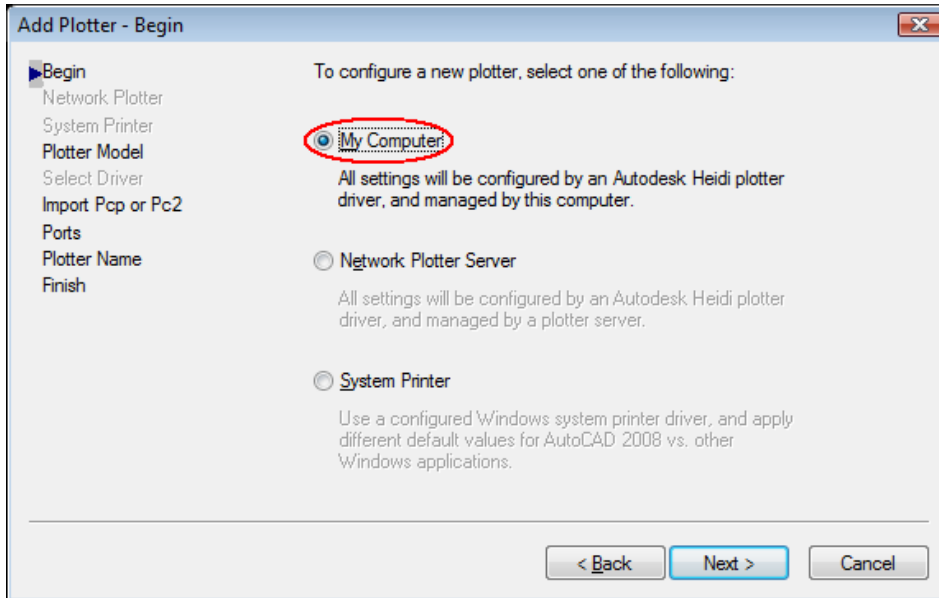
**NOTE:**

The pop-up will not appear when a general user opens Add-A-Plotter Wizard.

Click [Next].



Select [My Computer], and click [Next].

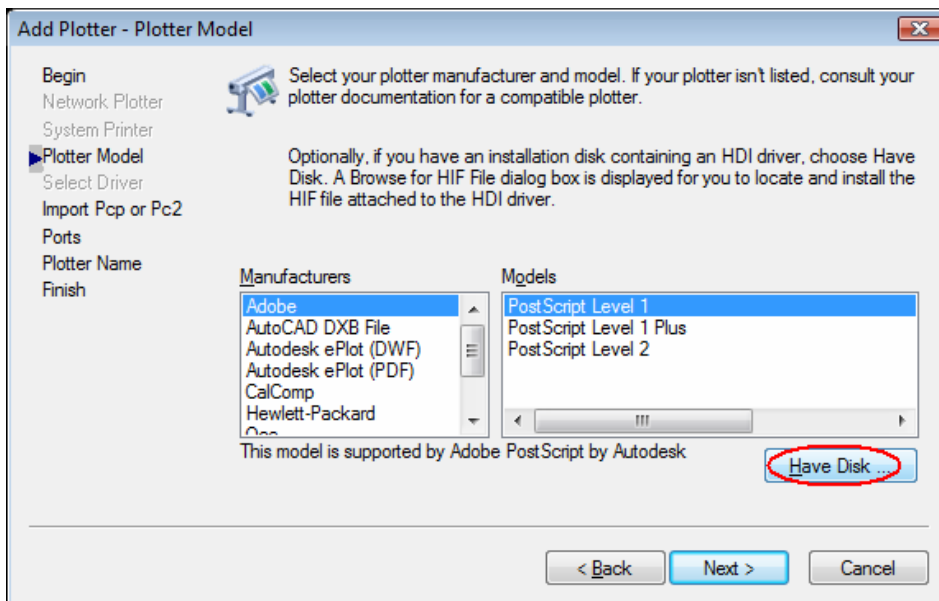


Click [Have Disk].

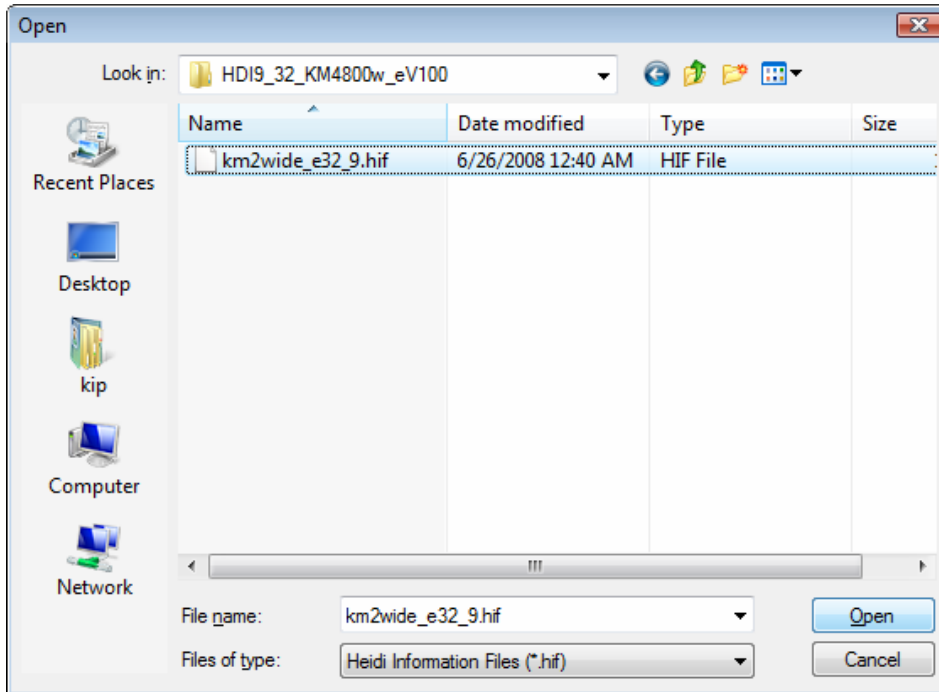
**NOTE:**

**A general user does not need to click [Have Disk] as the driver will have been installed by an administrative user.**

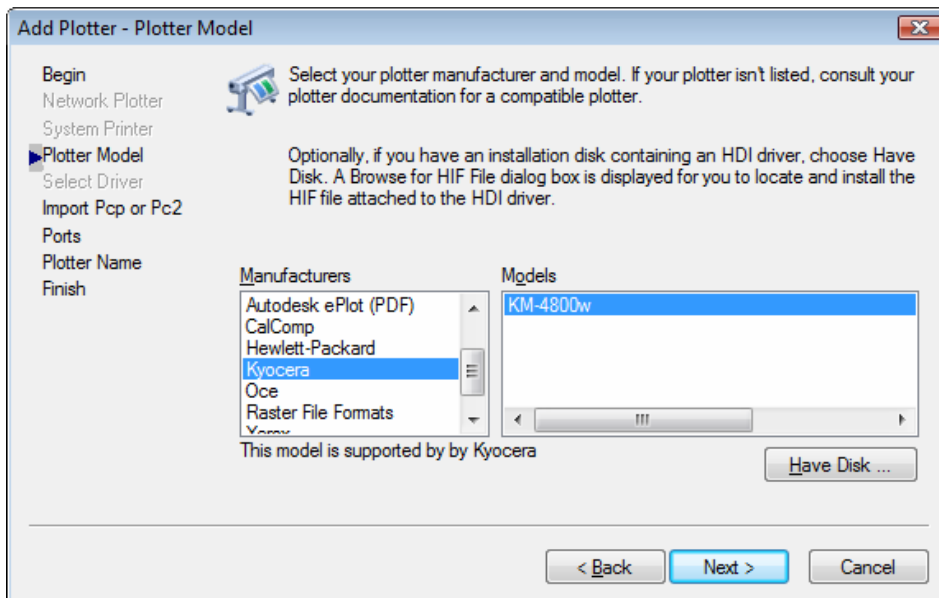
**Specify "Kyocera" in Manufacturers list and select "KM-4800w" in Models list.**



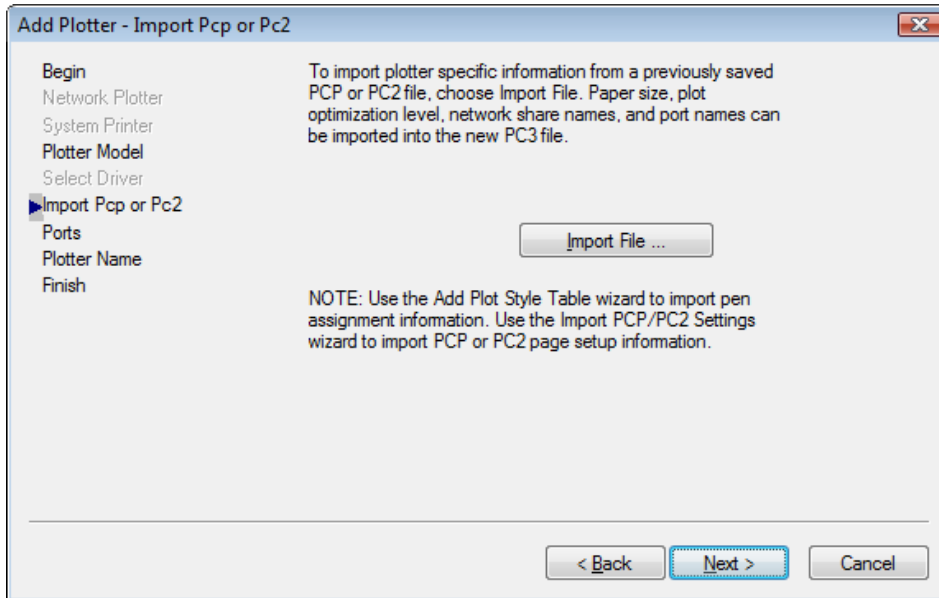
Specify [km2wide\_e32\_9.hif], and then click [Open].



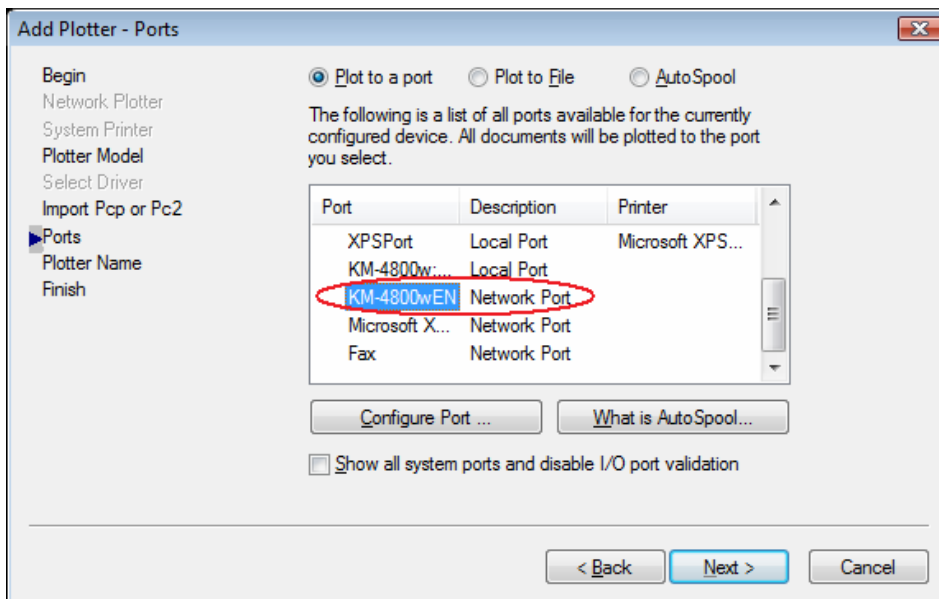
Select model name (KM-4800w) of [Kyocera], and click [Next].



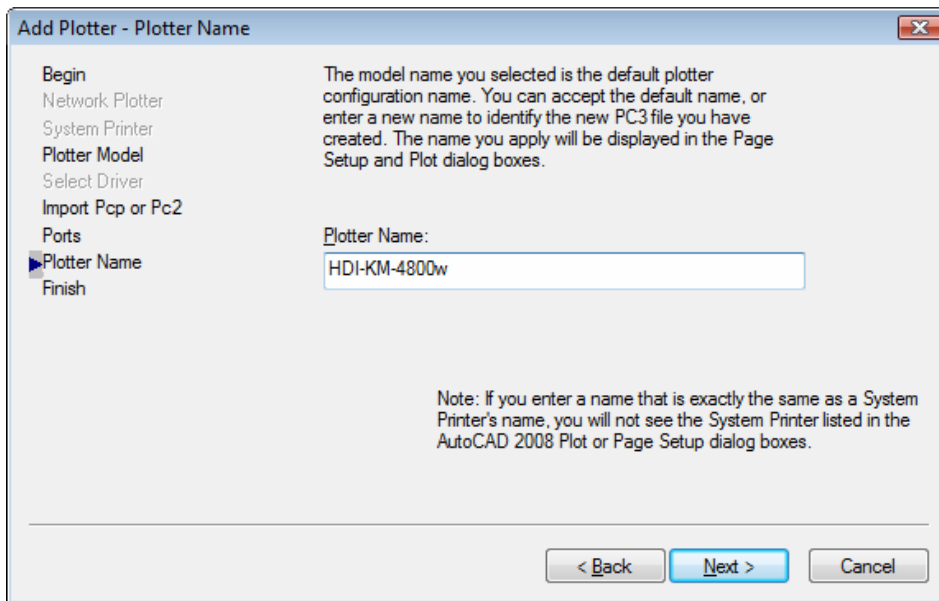
Click [Next].



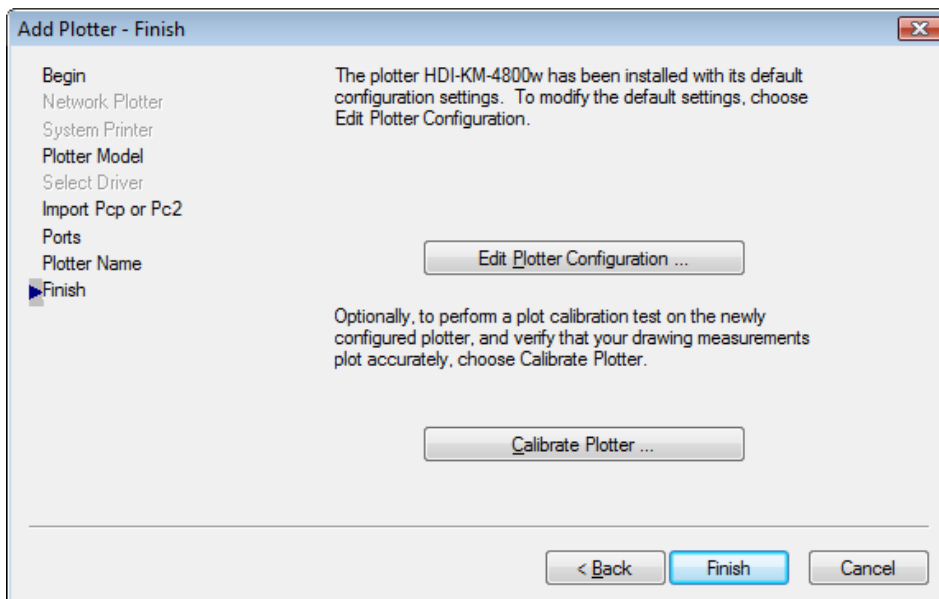
Check “KM-4800wEN Network Port”, and click [Next].  
“KM-4800wEN Network Port” will not appear if the printer driver is not installed.  
Install the printer driver first in this case.



Enter any Plotter Name, and click [Next].  
(For sufficient operation, you can add "HDI-" to the printer name)

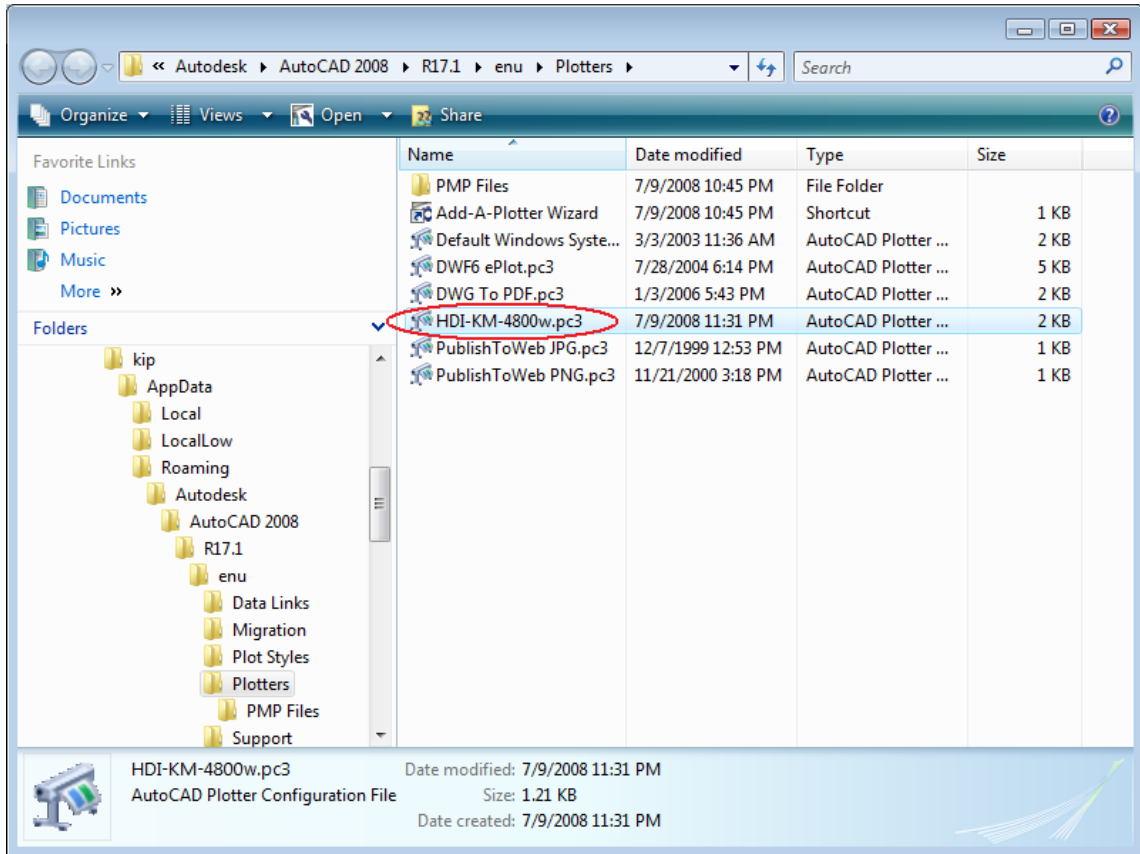


Click [Finish].



Setup is completed.

Added Plotter appears.



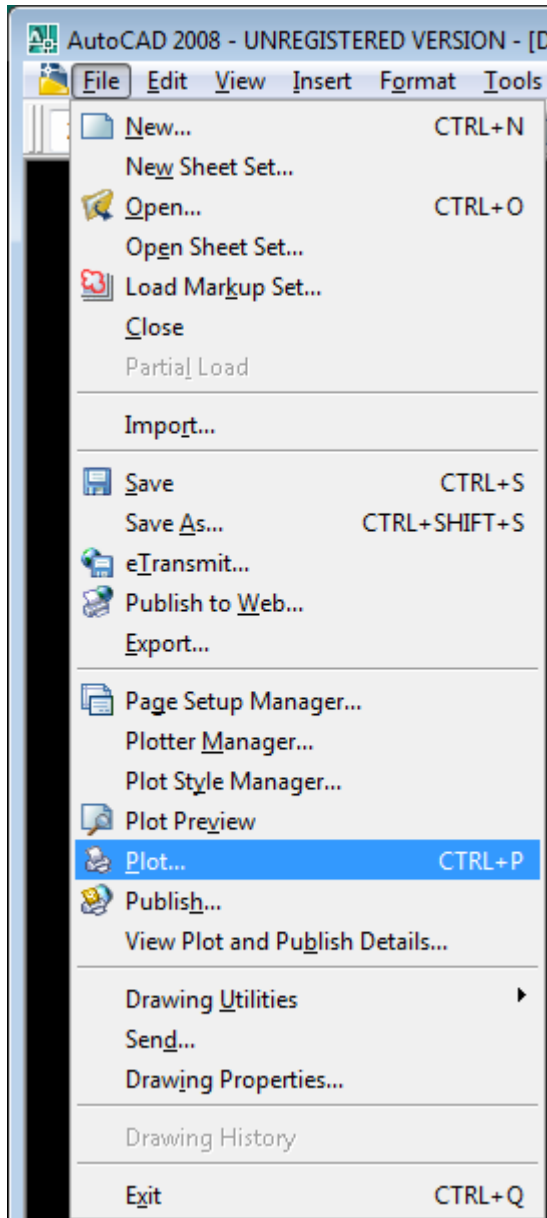
To update the HDI Driver, start the Auto Desk Plotter Manager under the Control Panel, uninstall the HDI Driver, and install the update version of HDI Driver.

## 4. Operation of HDI Driver

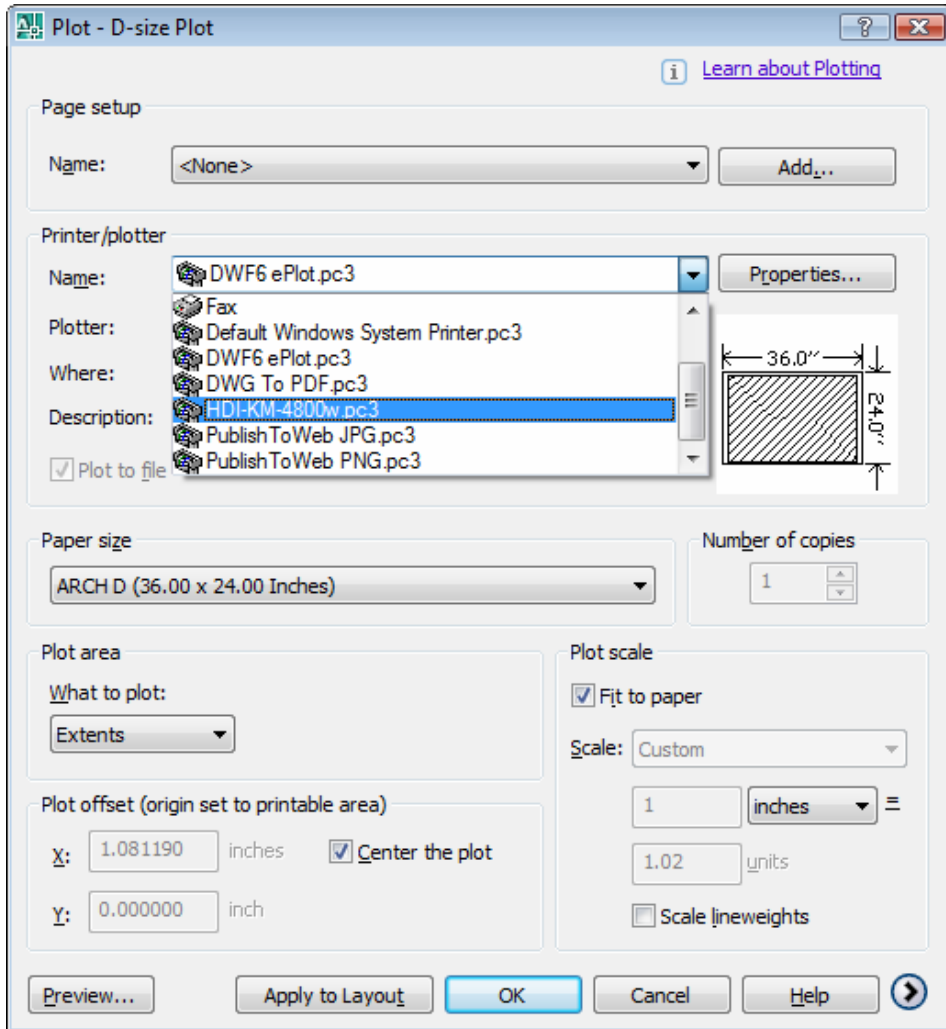
### 4.1. Print Procedure

Activate AutoCAD, and open the CAD file.

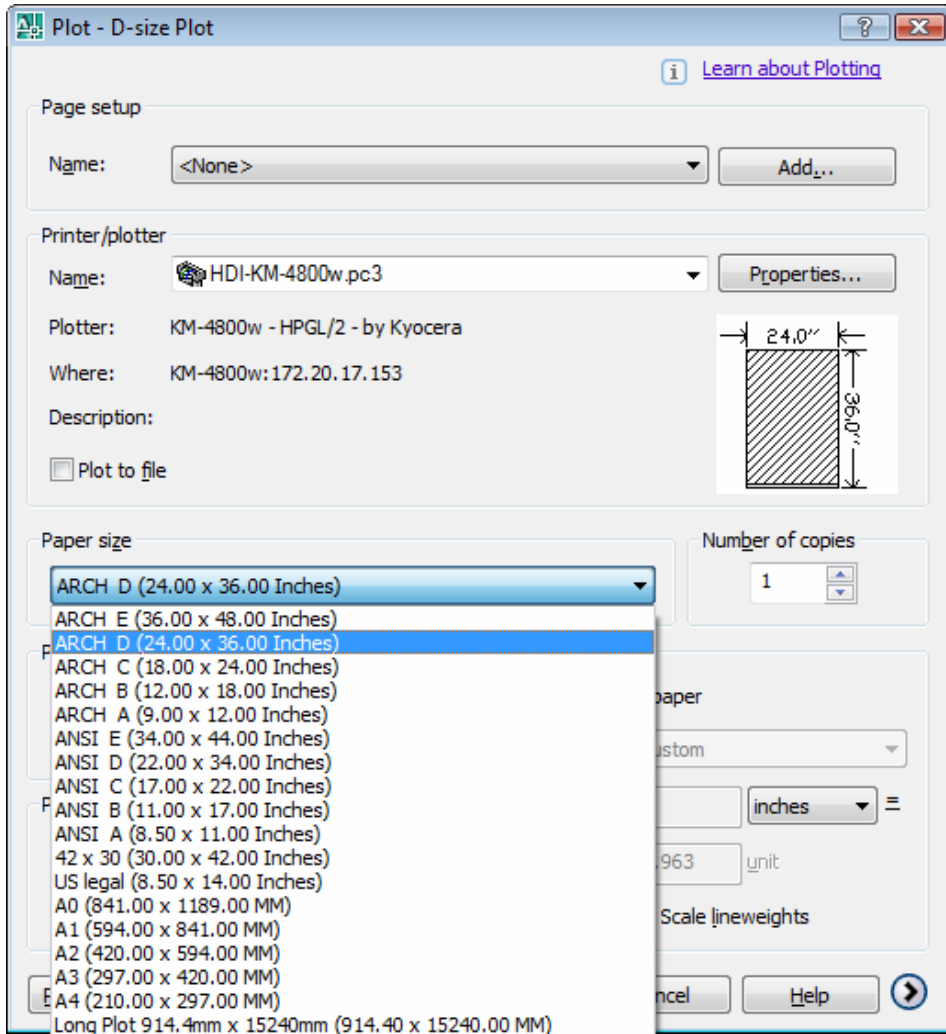
Select [Plot] under [File] of Menu bar.



Select Plotter (HDI-KM-4800w.pc3) from [Printer/Plotter] list.



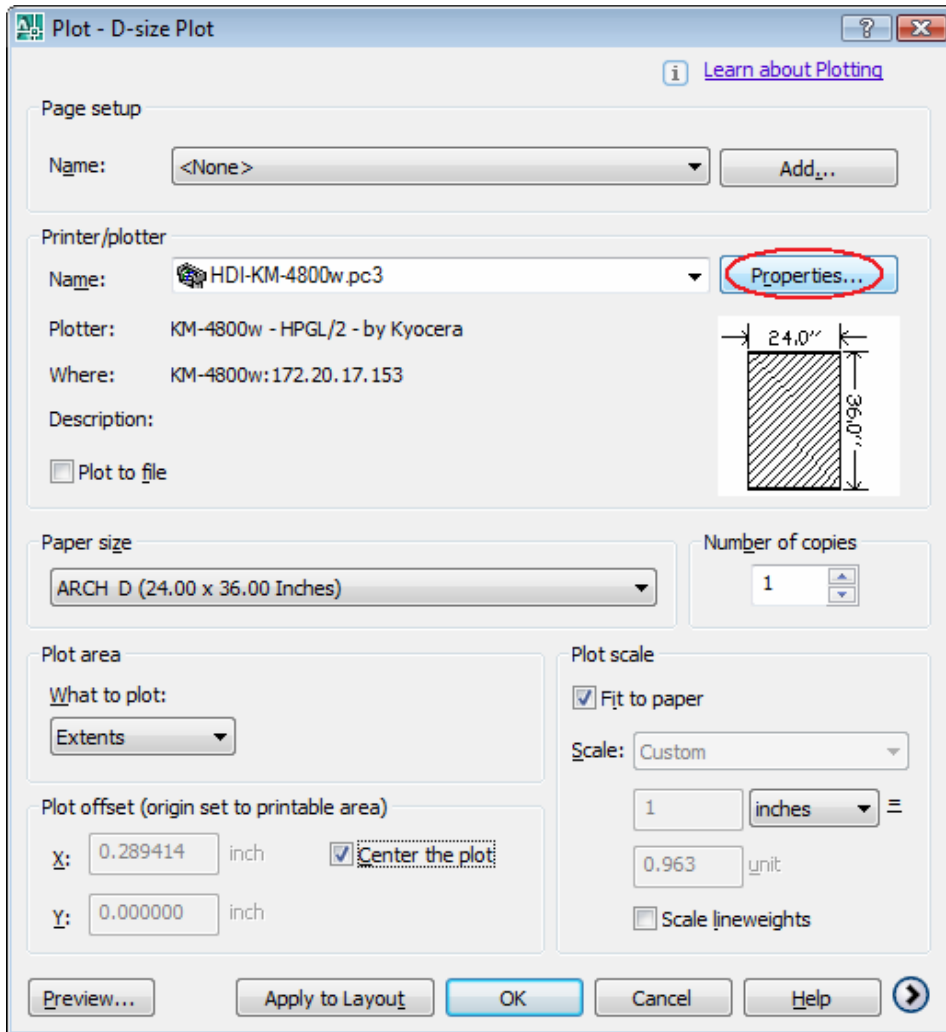
Select size to be output from [Paper size] list.



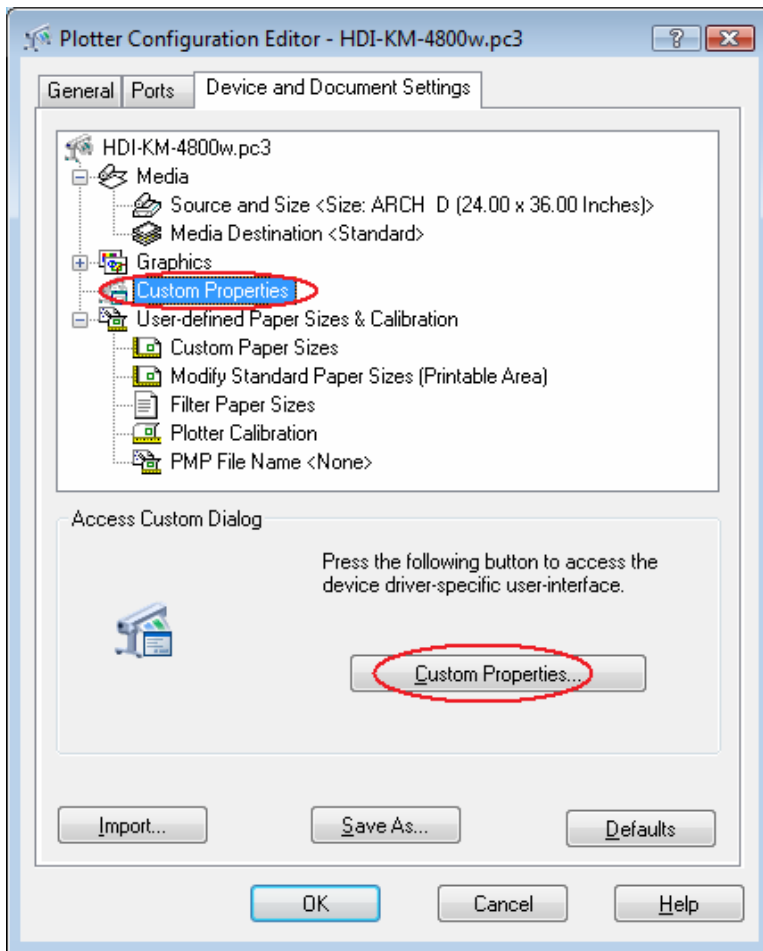
Click [OK], then it is output.

## 4.2. Custom Output Setting

Click [Properties] of [Printer/Plotter] list.

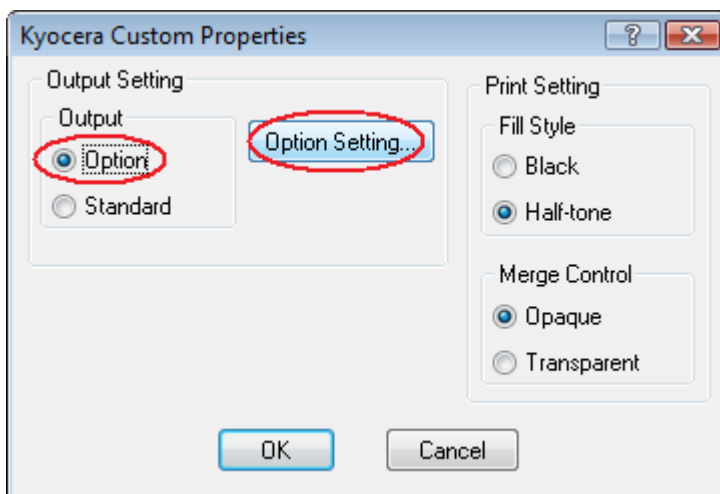


Select [Custom Properties] of [Device and Document Settings], and then click [Custom Properties] of [Access to Custom Dialogue].

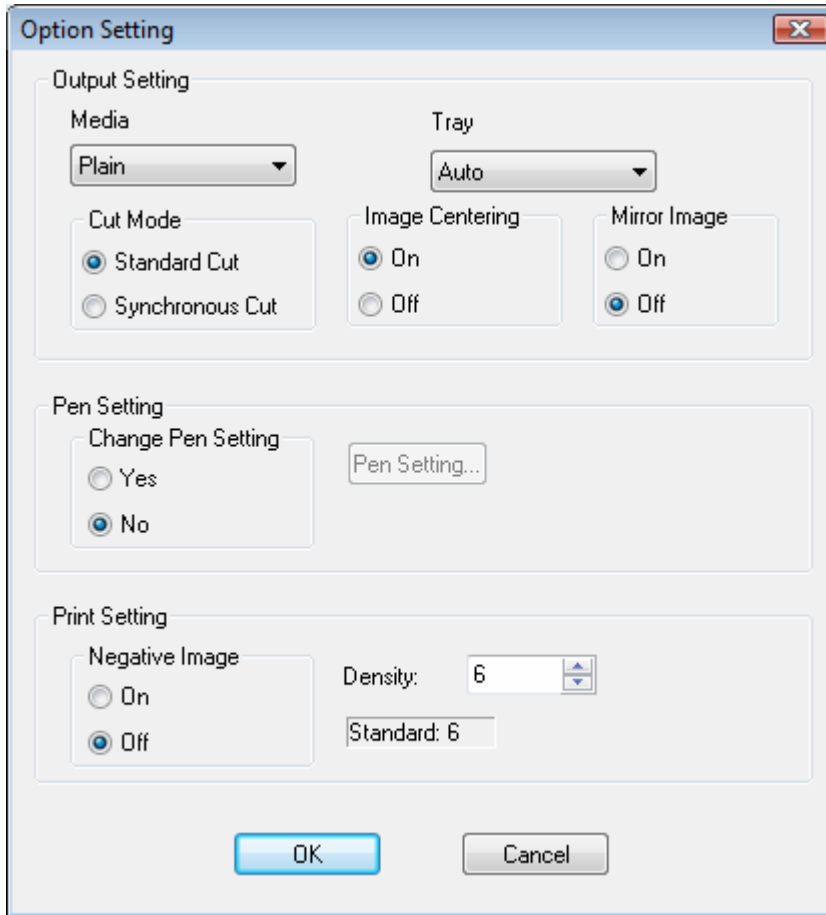


<Output Setting>

If [Option Setting] is not required, select [Standard] under [Output].  
In order to set [Option Setting], click [Option].



- Option Setting



<Paper media selection>

Plain  
Vellum  
Film

<Tray selection>

Auto  
Deck 1  
Deck 2  
Bypass

<Paper cut mode>

Standard cut  
Cut with standard size.  
Synchronous cut  
Cut with the length of output data.

<Image Centering>

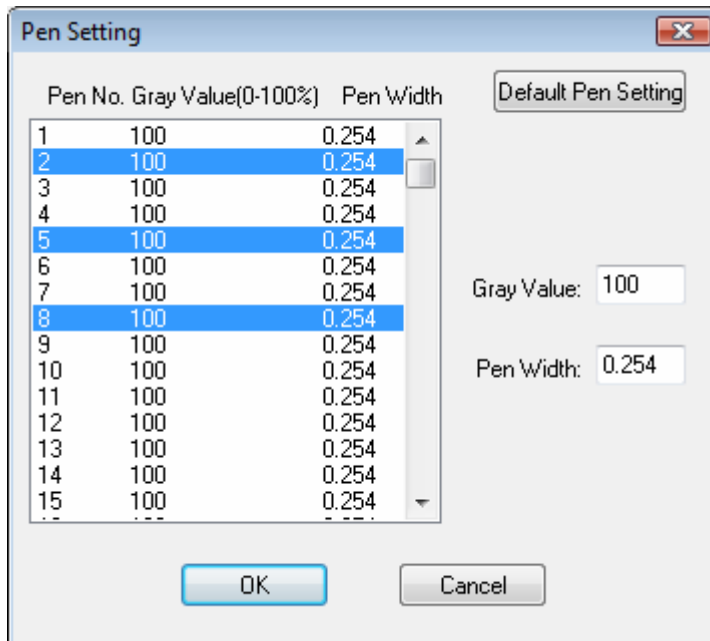
ON  
OFF

<Mirror Image>

ON  
OFF

<Pen Setting>

Select Gray Value and Pen width of Pen 1 - 255.



<Negative Image>

ON  
OFF

<Image Density>

1 - 9

## AutoCAD HDI Driver User's Manual

---

2008. 7 Rev. 1.0

---

The Copyright Act protects this manual.

It is prohibited to copy or duplicate all or a part of this manual without permission.