



A Buyers Laboratory Document Imaging Device Assessment

Kyocera KM-5050
 50 PPM Segment 4 Monochrome Device
 Copy • Print • Fax • Scan



Overall Rating	★★★★★
Value	★★★★★
Ease of Use.....	★★★★★
Copy Productivity	★★★★★
Print Productivity	★★★★★
Image Quality.....	★★★★★
Multitasking.....	Lab Test Report Only
Utilities	Lab Test Report Only
Reliability	Lab Test Report Only
Feedback to Workstations	Lab Test Report Only
Toner Yield/Cost per Page	Lab Test Report Only

* Based upon a five-star rating system, with five being the best.

Complete specifications information for this unit, including pricing for accessories and options, is available through bliQ, at www.buyerslab.com/bliq.

Testing method: The unit's copy/print capabilities were tested using a Windows XP workstation with a crossover cable, the standard PowerPC750FL print controller and the KPD3 driver (version 4.1). The crossover cable eliminates network traffic, allowing for optimal productivity of the unit.

Comparative Analysis

Geared by the manufacturer to users running monthly volumes of up to 200,000 impressions, the Kyocera KM-5050 proved to be a competitive overall performer in BLI's field test, offering good ease of use at a low price on its way to an overall rating of Four Stars.

The device features standard copy, print and scan functionality, as well as optional faxing/network faxing. Further, despite being a monochrome device, the KM-5050 features standard colour scanning and sending capability at the company's rated speed of 25 ipm. For the base price, users get 512 MB of memory (upgradeable to 1 GB) and a 40-GB hard drive that is shared among functions.

Please note that the following document is based on tests conducted on a Kyocera KM-5050 sold in the United States. BLI has updated this report to reflect the specifications and features available on the European version of this model. Although there may be slight differences in features and pricing, both models are manufactured by the same parent company, share many of the same components, and are based upon a common engine. Tests were conducted using U.S. letter-size paper and A4 results may vary.

For a copy of BLI's upcoming Kyocera KM-5050 Lab Test Report, contact BLI at (201) 488-0404, info@buyerslab.com, or www.buyerslab.com.

FIELD TEST

The 50-ppm KM-5050, along with the KM-3050 and KM-4050, offer a number of new features that distinguish them from their predecessors. For example, the unit features dual scan heads, allowing scanning of both sides of a two-sided document in a single pass. In addition, Kyocera states that unlike its competitors, the devices' dual scan heads are offset, thereby preventing bleed through. Dual scan heads also minimise wear on originals and reduce the amount of misfeeds likely to occur. The device also features a completely redesigned colour LCD display for the control panel, enhancing ease of use. A USB port allows users to print PDF files or to update the machine and print controller firmware. Further, single-board architecture has replaced individual circuit boards for copy, print and scan functions, thus reducing hardware costs, according to Kyocera. The optional fax and network fax system also utilise the single-board architecture.

According to Kyocera, finishing options for the KM-5050 are modular and can be upgraded as users' needs change. The 3,000-sheet finisher features three-position stapling capacity of up to 50 sheets. The optional booklet folder

Advantages

- Suggested retail price (SRP) is among the lowest for the group.
- Good overall ease of use from the redesigned colour LCD display for the control panel. For example, the control panel is highly customisable, as users can choose to display up to six features for programming from the first screen. Further, up to six advanced selections can also be programmed and stored on the Quick Setup tab as shortcuts.
- Print drivers offer a consistent look and feel for each driver, as well as a graphical display. Most of the selections for a typical print job are also located on the first tab.
- Standard colour scanning and sending capability.
- Dual scan heads for the optional document feeder allow scanning of both sides of a two-sided document in a single pass, reducing wear on originals and the amount of misfeeds likely to occur.
- Highest preventive maintenance schedule and bypass capacity when compared with similarly equipped models available.

Shortcomings

- Print productivity is well below average overall.
- BLI technicians made note of a slight delay when switching between some functions and selections via the control panel.
- The print drivers do not offer a point-and-click interface for selecting paper source and output destination. Further, the print drivers do not offer consumables feedback.
- Misfeeds by the pressure rollers in the fusing section could be a concern, as there is no provision to release the pressure of the fusing rollers before removing a misfeed.
- Standard and maximum paper capacities are well below average when compared with similarly equipped models available.

can be added to the 3,000-sheet finisher, enabling users to saddle-stitch up to 16 sheets to create 64-page booklets. In addition, users can add a two- and three-hole punch unit to the 3,000-sheet finisher. Additional finishing features include a 1,000-sheet finisher and a 500-sheet internal finisher that both feature single-position stapling up to 30 sheets.

▲ Value Analysis

★★★★

The KM-5050, configured as a copier/printer with PostScript 3 printing, saddle-stitch finishing and a DSPF, has a suggested retail price (SRP) that is among the lowest for similarly equipped models available. In addition, the device offers the highest preventive maintenance schedule (500,000 impressions) and bypass capacity (200 sheets) for the group, as well as a competitive drum life (500,000 impressions), toner yield (34,000 impressions) and document feeder capacity (100 sheets). BLI rates value by evaluating a unit's SRP in relation to its overall performance, paper handling, and user and service intervention (see Advantages/Shortcomings). Value analysis is based on U.S. price structures and prices vary according to country where the device is purchased.

▲ Summary

Because of its good ease of use and low price, BLI gives the KM-5050 an overall Field Tested Rating** of Four Stars.

*** Note: The data presented in this Field Test Report was obtained from testing performed by BLI outside of our 10,000 sq. ft. test lab. BLI's Lab Test Reports contain the results of BLI's extensive in-house testing for reliability, multitasking, toner yield/cost per page and performance of additional functions and on additional platforms. Please contact BLI (phone 201-488-0404, or e-mail info@buyerslab.com) for information regarding when the Lab Test Report for this product will be available.*

▲ Ease of Use	★★★★★
Control panel	★★★★★
User maintenance.....	★★★★★
Print drivers.....	★★★★★

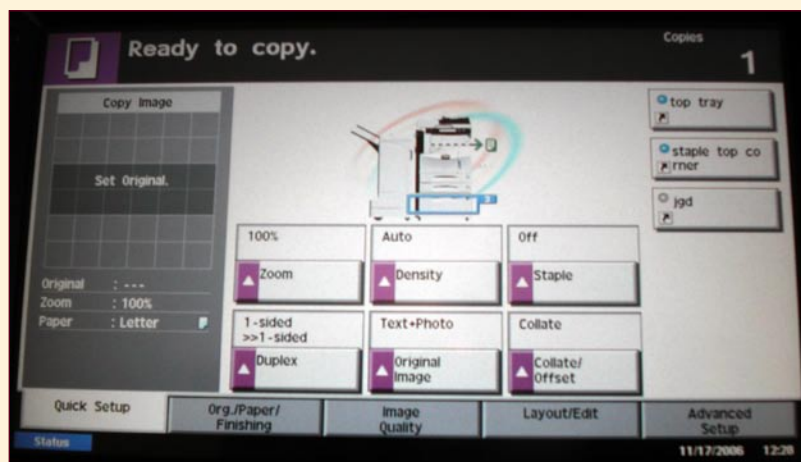
Control Panel

The KM-5050 features a completely redesigned colour LCD display for the control panel, enhancing ease of use. Although there is no contrast dial, BLI technicians noted that the clarity of the LCD is excellent. In addition, the control panel can be tilted to two locking positions, enabling users to view it from various angles dependent on lighting conditions, and also providing easy access for persons with disabilities. A Help hard key is also available, and provides a fairly detailed list which can take users through various selections of the control panel. Help is available for basic copying, scanning, selecting destination from address book, printing, checking job details, changing job processing order, checking paper and checking toner. BLI technicians did note that the help functionality is not context sensitive, and that users must search through the Explanation of Functions tab for details on basic copying capabilities such as duplexing and making a booklet. Further, LED indicators notify users of the device status. Green indicates ok, yellow indicates that a job is processing and red indicates a problem with the device.

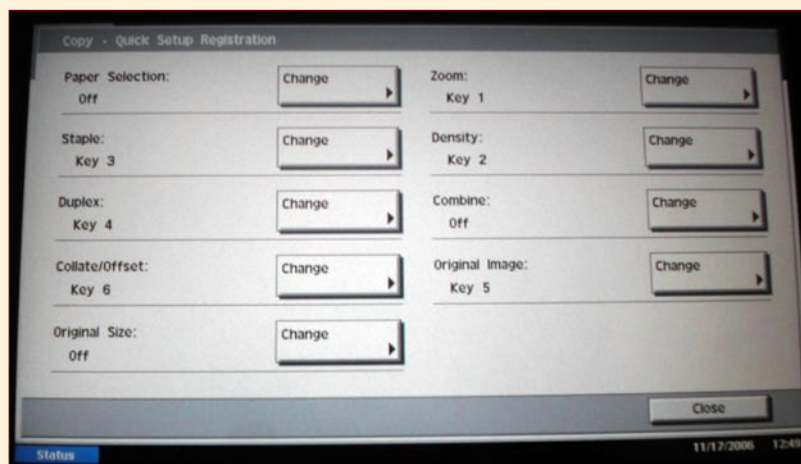
BLI technicians noted a slight delay of two to three seconds when switching between some functions and selections. According to Kyocera, the delay is due to the operating system writing onto the hard drive. Hard keys for Status/ Job Cancel, Copy, Program, Send, Application and Document Box allow users to easily switch between the different functions of the device. The hard keys are colour coded and include LED indicators that remain lit to indicate which function is in use. In addition, the control panel screen is colour coded based on the function users have selected, serving as an additional reference for users to know which function they are currently working in.

The control panel is highly customisable, and the Application hard key allows users to change the default screen to include any of the available functions. In addition, users can choose to display up to six features for programming from the first screen, the Quick Setup tab. Selections available include paper selection, staple, duplex, collate/offset, original size, zoom, density, combine original image. When any of the features is selected, a window opens within the Quick Setup tab to allow users to choose their settings for the current job being programmed. Settings are sometimes displayed as icons, thus users must know what settings each icon represents, and BLI technicians found some of them confusing. However, in most cases users can select More so that settings are displayed in text form under an additional window. Up to six advanced selections, such as booklet, can also be programmed and stored on the Quick Setup tab as shortcuts. The Accessibility Display hard key

enlarges the copy screen for users who prefer this setup, such as the visually impaired. Access to the typical copy job features displayed on the Quick Setup tab are still available; when a feature is selected, however, a separate window opens up for users to choose their settings, versus the settings being displayed within the Quick Setup tab itself.

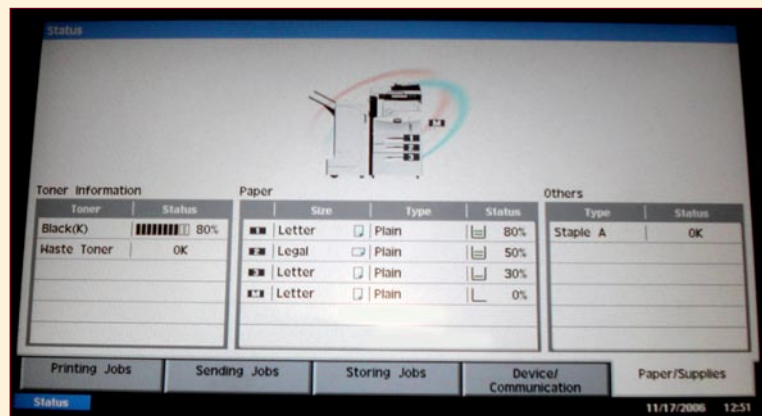


Quick Setup Tab



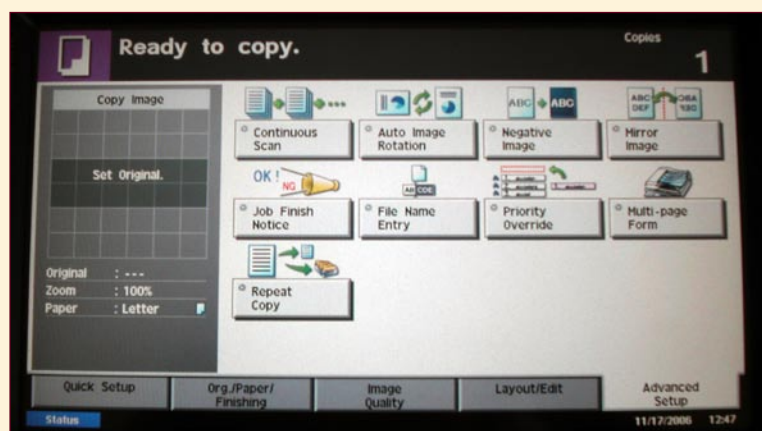
Users can choose to display up to six features to be programmed from the first tab.

When users select the Status/ Job Cancel hard key and then the Paper/Supplies tab, detailed information on toner and paper supplies is provided. Details include percent full for toner and paper, as well as the status of the waste toner container and size and type of paper loaded in each tray. A graphic of the device on the Quick Setup tab highlights the selected paper source and finishing tray, but users cannot select the paper drawer from it.



Paper/Supplies Tab

Features available under the Image Quality tab include Density, Original Image and EcoPrint. Original Image allows users to select the document type for best copy results; selections include Text + Photo, Text, and Photo. The EcoPrint feature enables users to conserve toner when high quality is not necessary during printing. The Layout/Edit tab includes selections for inserting covers, as well as Booklet, Form Overlay, Combine and Border Erase.



Advanced Setup Tab

Users can choose to insert no covers, front covers, or both front and back covers. The Advanced Setup tab features selections for continuous scanning and job build. Continuous scanning enables users to either copy documents that exceed the capacity of the document feeder or copy documents from both the document feeder and platen glass to allow users to mix documents from these two sources. Job build allows users to apply different settings to each section of a document.

To access the job queue, users select the Status/Job Cancel hard key. The job queue indicates the numbers of sets in copy and print jobs and counts up as sets are copied and printed. Under the Details touch key, the job name, number of originals and number of pages copied or printed are displayed. BLI technicians did note, however, that the queue does not count the number of pages copied or printed in real time; instead users must exit the Details screen and then return in order for this data to refresh. Users can move and delete jobs. In addition, the Log tab indicates copy and print jobs that are complete and cancelled (incomplete). There is a pause key within the job list that will hold all print and copy jobs at the device. Thus, if a user programs a copy job or sends a print job it will sit in the queue and wait. There is no feedback to the administrator that a user entered the device while in this mode and there is no time out feature that would allow the machine to resume. A walkup user will have to manually press the resume key to continue, which could slow down productivity.

To access the meter count, users select the Counter hard key. The electronic meter counter on the tested unit provides users with printed page counts for copy and print, as well as scanned page counts (copy and others). The information can also be printed as part of the status page. The status page provides useful information on the device's configuration and settings, along with network information and IP address. The device's serial number is also provided on the printout, as is the status of toner remaining for the device.

User Maintenance

Opening the drawers for the device is simple. Although users must pull a latch built into the drawer handle to open the drawers, it is fluent and done in one motion.

Adjusting the paper drawers is competitive with comparably equipped models tested. The width guides are adjusted and locked into place via a spring-loaded lock built into the guide. However, the drawers also feature sliding metal length guides with pegs on the underside. Thus users must lift the guide and slide it to the appropriate paper size, then push the guide down in the appropriate holes of each drawer to lock into place. The drawers do feature automatic paper sensors and therefore no confirmation via the control panel is needed when changing the paper size, which BLI technicians consider a plus. For the bypass tray, users select the MP Tray Reservation key and a screen is then displayed for users to select the paper size loaded.

Throughput Capabilities and Materials

Standard paper supply	Sources	2
	Total capacity	1,000 sheets
	Paper sizes	A6 to A3
	Weights	60 to 105 gsm
Bypass	Capacity	200 sheets
	Paper sizes	A6 to A3
	Weights	45 to 200 gsm
	Automatically detects paper and paper size?	No
Document feeder (Optional DSPF)	Capacity	100 sheets
	Paper sizes	A6 to A3
	Weights	45 to 160 gsm
Maximum paper supply	Sources	5
	Total capacity	4,200 sheets
	Paper sizes	A6 to A3
	Weights	45 to 200 gsm
Media types	Bond paper, recycled paper, labels, transparencies and envelopes	



Misfeed Access Areas

FIELD TEST

Procedures for removing misfeeds were simple overall. When a misfeed occurs, two dynamic graphics appear on the display; the first is a graphic of the device showing users where the misfeed is located, while the second graphic takes users through the misfeed removal process step by step. The indicators clear as the misfeeds are removed. Text instructions are also provided. A guide over the drum prevents it from being scratched when removing misfeeds, which BLI technicians consider a plus. BLI technicians did note that misfeeds by the pressure rollers in the fusing section could be a concern, as there is no provision to release the pressure of the fusing rollers before removing a misfeed.

Toner replacement was found to be simple overall. Users lift the blue latch to release the cartridge and grasp the toner cartridge and pull it out; users then hold the carrying handle and lift the blue latch again to remove the cartridge from the machine. BLI technicians did note, however, that the toner has a tendency to spill when the cartridge is removed.



Dynamic graphics and text instructions guide users through the misfeed removal process.

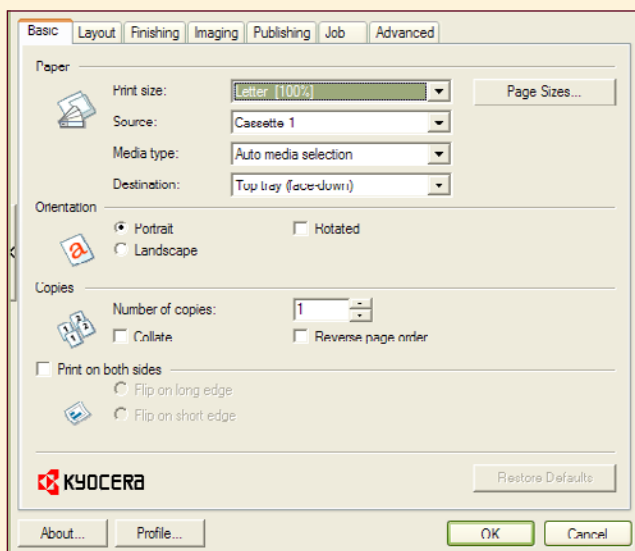


Replacing Toner

Print Drivers

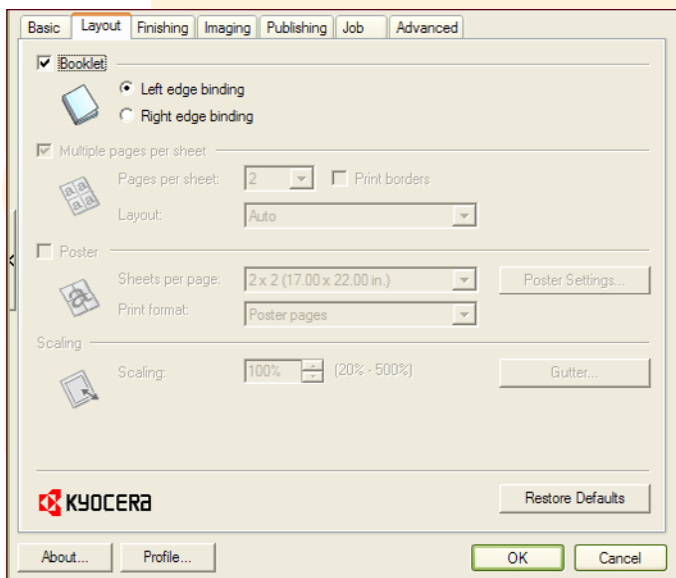
Printing is standard on the KM-5050 with the embedded PowerPC750FL print controller. The print controller features a 600-MHz processor and shares memory with the system. Supported emulations include PRESCRIBE, PCL 6 (PCL XL, PCL 5e) and PostScript 3 (KPDL3). Other available print drivers include a PostScript Printer Definition (PPD) for Mac and additional drivers for Linux and UNIX. These drivers can be downloaded from the company’s Web site, according to Kyocera. In addition, the PDF driver, which is included with the KX Driver 4.2.version, gives users the ability to convert documents into PDF images and also allows users to assign security rights to the converted PDF document similar to Adobe Acrobat Professional.

The model features an all-in-one print driver, thus only one driver needs to be installed on workstations. The print drivers are also very similar in appearance, making navigating their screens easier for users who need to switch between them for different types of jobs. BLI technicians did note, however, that unlike most competitive models, users must go through properties in order to alternate between the PostScript 3 and PCL 6 print drivers. BLI technicians find it more convenient to switch between the print drivers within the application in use.

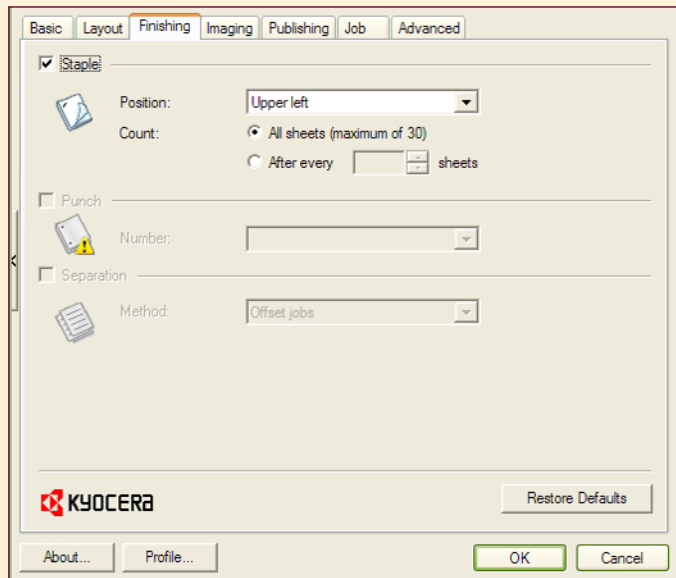


Basic Tab

The print drivers automatically detect and display the device’s configuration, eliminating the need for the administrator to manually specify this information. In addition, most of the features required for a typical print job are located on the Basic tab, including paper selection, quantity selection, duplexing and collating. Users must navigate through two additional tabs to program selections for finishing, however, as the Layout tab features the final selection needed for booklet making while stapling and hole punching are programmed via the Finishing tab. Further, BLI technicians noted that users must select the destination for staple and hole punch, and also select the folding tray on the Basic tab prior to making booklets, before these functions can be programmed by the user. In comparison, some competitors’ drivers will automatically change to the correct paper source and booklet tray when these functions are selected. The print drivers do not offer a point-and-click interface for selecting paper source. However, the drivers are graphical, as users can view either a graphic of the device which shows the selected paper drawer, or a graphic which displays the settings programmed for the current print job. Further, the currently programmed settings can be listed in text form along the left side of each of the print driver tabs.

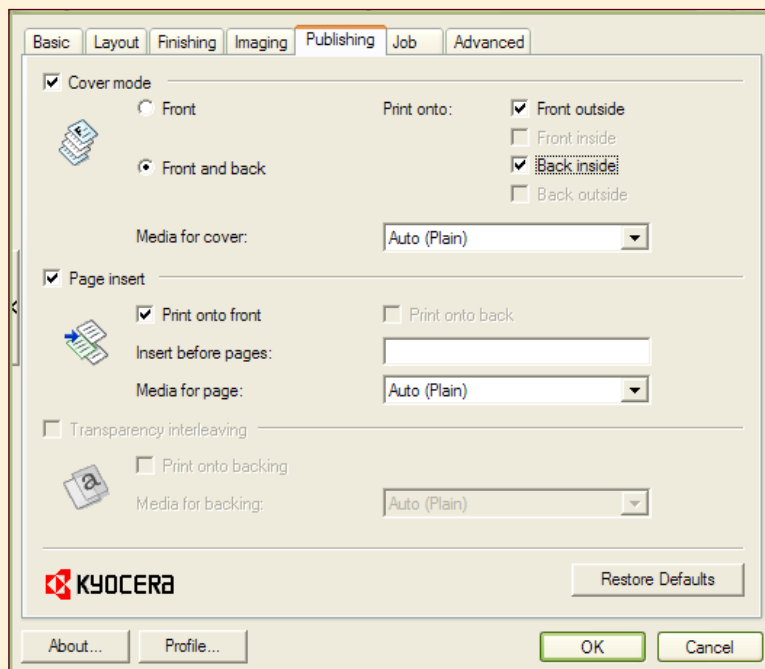


Layout Tab



Finishing Tab

The Layout tab features selections for reduction/enlargement, margin shift and poster. Users can insert front covers or front and back covers via the Publishing tab, and also choose the type of media for covers. In addition, users can add inserts before specific pages and select the type of media to use. When e-MPS is added to the device, the Job tab features selections for quick copy, proof and hold, private print, job storage and custom box. Custom box allows a user to type a job name up to 79 characters for job storage, making it easy for a user to identify their job. The Advanced tab features selections for watermarking and Prologue/Epilogue, which allows users to insert macros into specific locations in a print job.



Publishing Tab

▲ Copy Productivity.....★★★★★

First-copy time.....★★★★★

Copy efficiency.....★★

First-Copy Time

The KM-5050’s first-copy time from the platen, at 3.5 seconds, is the fastest for similarly equipped models tested to date. The model’s first-copy time from the document feeder, at 5.2 seconds, is also the fastest for the group.

First-copy time measures the time it takes for the first copy to be produced after the Start button is pressed. The test is conducted using BLI’s test original with 6% page coverage, using normal contrast and standard resolution and with all auto features off.

First-Copy Time (in Seconds)

	Kyocera	Competitive Units	
	KM-5050	Fastest	Slowest
Platen	3.5	3.5	8.4
Document feeder	5.2	5.2	8.9

Bold indicates that this unit is the best in the group.

Copy Efficiency

The KM-5050’s copy efficiency is competitive for the group in 1:1 mode, at 86.6%, but is the lowest for the group in both 1:2 mode, at 53.1%, and 2:2 mode, at 57.2%.

BLI tests a unit’s copy efficiency (the percentage of the rated speed at which the unit operates when producing real-world jobs) by making one, five, 10 and 20 sets of a 10-page document in three copy modes: 1:1, 1:2 and 2:2. BLI obtains the overall efficiency for each copy mode by averaging the efficiency ratings (derived by dividing the tested speed of the device by the rated speed and then multiplying by 100) for each run length. The closer the rate is to 100%, or if it exceeds 100%, the more efficient the unit.

Booklet Copy

BLI technicians found the procedures for programming booklet copies from the control panel to be simple overall, as programming was intuitive.

Tests were conducted using U.S. letter/ledger paper and A4/A3 results may vary slightly.

FIELD TEST

The unit's efficiency when copying 10 sets of a 16-page document output in booklet mode is the lowest for the group, at 43.6%. It completed the job in 7 minutes and 20.78 seconds, running at 21.8 cpm. The closer the efficiency rate is to 100%, or if it exceeds 100%, the more efficient the unit.

- ▲ **Print Productivity** ★★
- Print efficiency ★
- Job stream ★★★

Print Efficiency

The KM-5050's print efficiency is the lowest for similarly equipped models tested to date in simplex mode, at 44.5%, and in duplex mode, at 41.0%.

BLI tests a unit's print efficiency by printing one and five sets of a 10-page document. Print jobs are sent using the PostScript 3 driver at 600 dpi resolution. BLI obtains the overall efficiency for each print mode by averaging the efficiency ratings (derived by dividing the tested speed of the device by the rated speed and then multiplying by 100) for each run length. The closer the rate is to 100%, or if it exceeds 100%, the more efficient the unit.

Booklet Print

BLI technicians found the procedures for printing booklets from the print driver to be good. Although programming is easy, users must first select the folding tray on the Basic tab prior to making booklets.

The unit's efficiency when printing 10 sets of a 16-page Acrobat PDF file output in booklet mode from the PostScript 3 driver is the lowest for the group, at 27.0%. It completed the job in 13 minutes and 19.41 seconds, running at 13.5 ppm. The closer the efficiency rate is to 100%, or if it exceeds 100%, the more efficient the unit.

Job Stream

The KM-5050's efficiency rate when printing BLI's job stream is below average for similarly equipped models tested to date, at 30.5%. The unit completed the test in 1 minute and 14.81 seconds, running at 15.2 ppm.

BLI's job stream includes Word documents, Outlook e-mail messages, Excel spreadsheets, PowerPoint, HTML and Acrobat PDF files. This test simulates the type of traffic a typical device might experience in a real-world, multi-

Tests were conducted using U.S. letter/ledger paper and A4/A3 results may vary slightly.

user environment. All of the files are sent to the printer as a group, at which time the stopwatch begins; timing ends when the last page of the last file exits the device. Job stream efficiency is determined by the percentage of the rated speed at which the unit operates when producing real-world jobs. The closer the rate is to 100%, or if it exceeds 100%, the more efficient the unit.

Tests were conducted using U.S. letter/ledger paper and A4/A3 results may vary slightly.

▲ **Image Quality** ★★★★★

Copy

Text was rated Very Good, as darkness, sharpness and smoothness of curves/serifs/lines were above average and text was fully formed. Line art was also rated Very Good, as closely spaced fine lines were distinct, line thickness was consistent and circles were fully formed. Solids were rated Very Good, with above-average darkness/boldness and consistent solid coverage. Halftone range was also rated Very Good, with grayscale visible from 15% (which is the minimum coverage level of the original) to 100% and all levels distinct. BLI technicians did note that the 15% level was too dark for the lightest shade. Halftone patterns were smooth overall and no banding was evident.

Print

Text was rated Very Good, as darkness, sharpness and smoothness of curves/serifs/lines were above average and text was fully formed. Line art was also rated Very Good, as closely spaced fine lines were distinct, line thickness was consistent and circles were fully formed. Solids were rated Very Good, with above-average darkness/boldness and consistent solid coverage. Halftone range was rated Fair; grayscale was visible from 1% to 100%, but some levels lacked separation. BLI technicians also noted that the range was too light overall. Halftone patterns were smooth overall, but banding was more than average.

Multitasking

Reserves

The KM-5050 allows users to reserve up to 9 additional copy jobs while a print or copy job is in progress.

Interrupt

The KM-5050's Priority Override touch key, located under the Advanced Setup tab, provides users with job interrupt functionality. When Priority Override is turned on, the device will immediately perform the interrupt job and users are able to access most of the features required for a typical copy job. The device will then immediately return to the non-interrupted job after the interrupt job is complete. This would be beneficial in a networked environment where many jobs would likely be waiting in the queue. Users can also setup a Priority Override shortcut key to be accessible from the first copy tab of the control panel to access the feature directly.

Other Features

Scan

Scanning is standard on the KM-5050, and includes black-and-white scanning at a rated speed of 50 ipm and colour scanning and sending at a rated speed of up to 25 ipm. Monochrome scanning file formats include PDF and TIFF; colour scanning file formats include PDF, JPEG and TIFF. Scan functions include e-mail, FTP, hard drive, SMB and TWAIN. The Multi Send feature improves user productivity when documents need to be delivered to multiple and diverse destinations from a single scan—fax, e-mail, FTP folder or network folder. The device also supports LDAP, with access for up to 65,000 addresses, according to Kyocera. Users can also store up to 2,000 addresses as well as 500 groups. Internet faxing is not yet available.

The optional KYOCapture solution is a server-based document capture application that allows users to create a rules-based workflow to “capture, process and route” hardcopy and electronic documents. The application is seamlessly integrated with the device and makes it easy for users familiar with copier operation to apply indexing information to scanned documents before sending them to different business applications, according to Kyocera. (BLI's KYOCapture Solutions Report is available via bliQ™.)

Also available is iTag, which helps organisations implement simple document management workflows without lengthy planning or setup time. A scaled-down version of KYOCapture, storing documents in a repository (database storage for docs), iTag is also useful for departments or offices within larger companies, letting them maintain their own document management application that can feed critical documents into the organisation's enterprise content management system. Described as a plug-and-play solution by Kyocera, users can have iTag up and running inside of an hour. The solution is tightly integrated with Kyocera MFPs, offering a clear and simple user interface right at the MFP's touch screen.

Fax

Faxing/network faxing is optional for the KM-5050. Fax memory is shared, and features include a 33.6-Kbps modem and MH/MR/MMR/JBIG compression. Fax image modes include normal, fine, super fine and ultra fine. Additional fax features include consolidated address book, duplex TX/RX, confidential RX/TX, F-code RX/TX, polling, broadcasting and fax box.

Security

The KM-5050 offers an array of features designed to enhance data, document and network security. Security features include network and local authentication, IP filtering and secure watermarking. Network authentication requires users to log in with a username and password each time a document is sent across the network. Local authentication requires users to enter a specific PIN number that has been registered at the device. IP filtering enables IT administrators to designate which IP segments are authorised to use the device, preventing unauthorised usage. With secure watermarking, a subtle watermark image is placed in the background of a printed document.

The optional Data Security Kit (C) automatically overwrites information stored on the hard drive when the device is powered up and/or after each copy, print and scan job. The optional PDF Enhancement kit allows users to encrypt PDF documents using 128-bit encryption as they are scanned so that they are password-protected for scan to e-mail, scan to file and scan to folder.

Administrative Utilities

The KM-5050 utilises Kyocera Command Center (KCC), which can be accessed from any web browser. Once an IP Address is assigned to the device, from either the control panel or Quick Setup tool, the browser can view the configuration page. This page is divided in various layers for easy administration, and can be secured with a password to limit access. From Kyocera Command Center, a network administrator can apply any network or device setting, including Simple Network Management Protocol (SNMP) or Simplified Mail Transfer Protocol (SMTP).

KM-NET Viewer is an advanced network management software tool that is compatible with all Kyocera printers and MFPs, as well as those of other vendors, by using the standardised SNMP. The settings of all printers on the network can be checked visually and amended from any Windows PC. Further, KM-NET Viewer acts as a real-time, early warning system by sending e-mail messages on the machine status, as well as when toner and paper are low. In addition, administrators can opt for pop-up or audio notification. Filters also allow administrators to see which devices have errors.

KYOCERA COMMAND CENTER

Start > Status Pages: Counters: by Function

Counters

by Function | by Paper Size

Printed Pages

Copiers:	2014
Printers:	571
FAX:	0
Total:	2585

Scanned Pages

Copiers:	265
Others:	26
Total:	291

Address Book

Address Book Contacts

Number of Contacts:	2
Maximum:	2000

Address Book Groups

Number of Groups:	1
Maximum:	500

Start > Status Pages: Jobs: Printing Jobs Log

Printing Jobs Log

Printing Jobs Log | Sending Jobs Log | Storing Jobs Log

Last Updated: 03/09/2004 01:12

Printing Jobs Log

Job Number	Status	Job Type	Job Name
000143	OK	Copier	doc20040309010551
000142	OK	Report	doc20040309005757
000126	OK	Copier	doc20040223000150
000125	OK	Copier	doc20040222235921
000124	NG	Copier	doc20040222235140
000123	OK	Copier	doc20040222235042
000122	NG	Copier	doc20040222235024
000121	OK	Printer	10ORIGfix.DOC
000120	OK	Copier	doc20040217234541
000119	OK	Copier	doc20040217225543

1 2 3 4 5 6 7 8 9 10 11: Next

Refresh

Kyocera Command Center

FIELD TEST