

DB Assistant

for TASKalfa CI SERIES

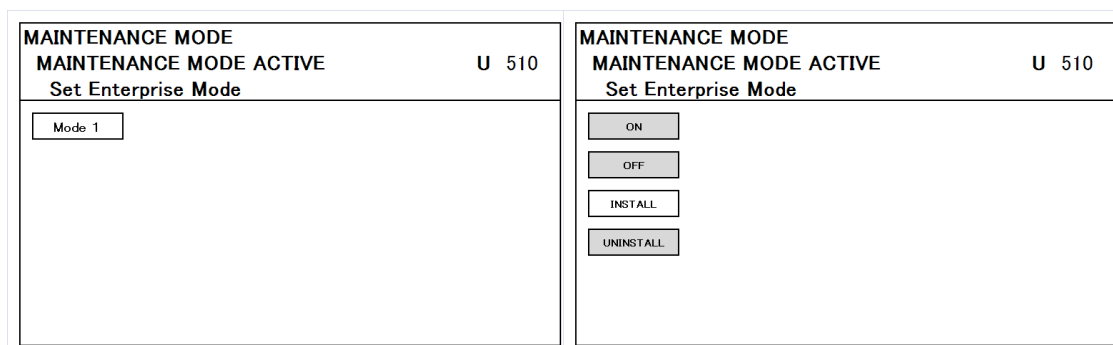
Operation Guide



Data Base Assistant with TASKalfa ci series

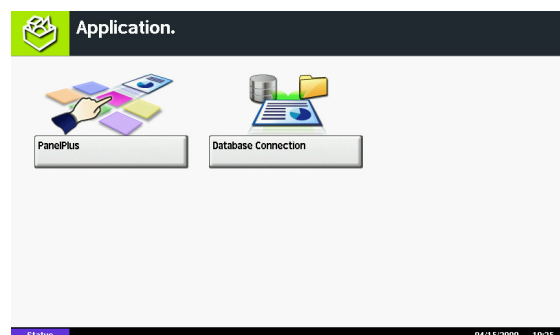
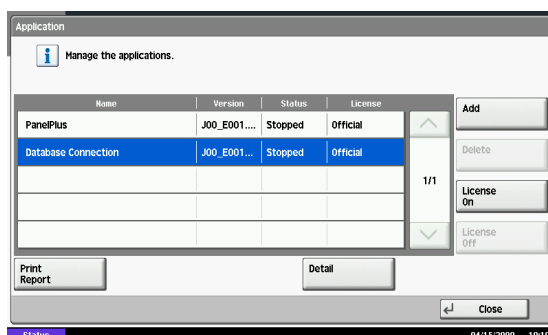
How to install the DBA in TASKalfa ci series

1. Insert the USB flash drive that copied the DBA package file to USB port of TASKalfa ci.
 - Package file name : DBAC_J00_E001_001_xxx.pkg
2. In the maintenance mode U510, select the mode 1 and press start key.
3. When "install" button turns to active, press start key.
4. After 'complete' message is displayed, "ON" button turns to active.
5. Select "ON" button and press start key.



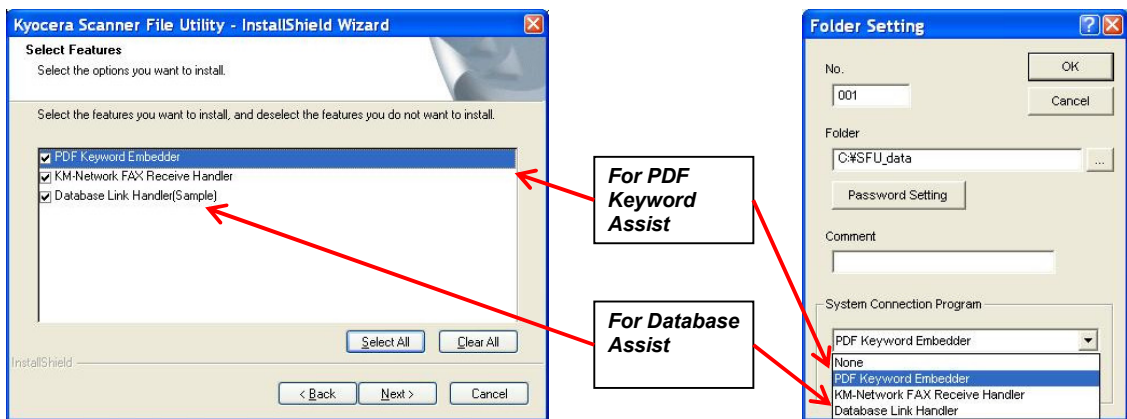
How to activate the DBA

1. In the system menu, select the "Application".
 2. Select the 'Database connection' in the application list and press the "License ON" button. When prompted to confirm licensing, press the "Yes" button.
 3. 'Official' message is displayed in the 'License' column.
 4. "Database Connection" appears in the Application screen.
 5. At the first time, start up the Database Connection, then the server configuration screen will be displayed. Enter the DBA server's IP address.
- Notes : It is necessary Scanner File Utility / W (Ver. 4.10.00).



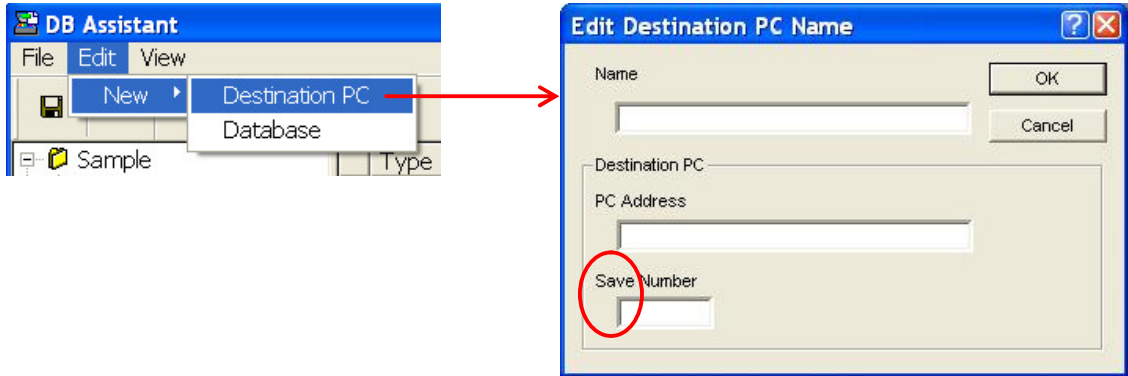
SFU setting for DBA

- ◆ For PDF Keyword Assist
 1. It is necessary to install the Scanner File Utility option that PDF Keyword Embedder.
 2. Select the 'PDF Keyword Embedder' in the Folder setting.
 3. This setting works with 'Destination PC' setting of DB Assistant.
- ◆ For Database Assist
 1. It is necessary to install the Scanner File Utility option that Database Link Handler.
 2. Select the 'Database Link Handler' in the Folder setting.
 3. This setting works with 'Database' setting of DB Assistant.



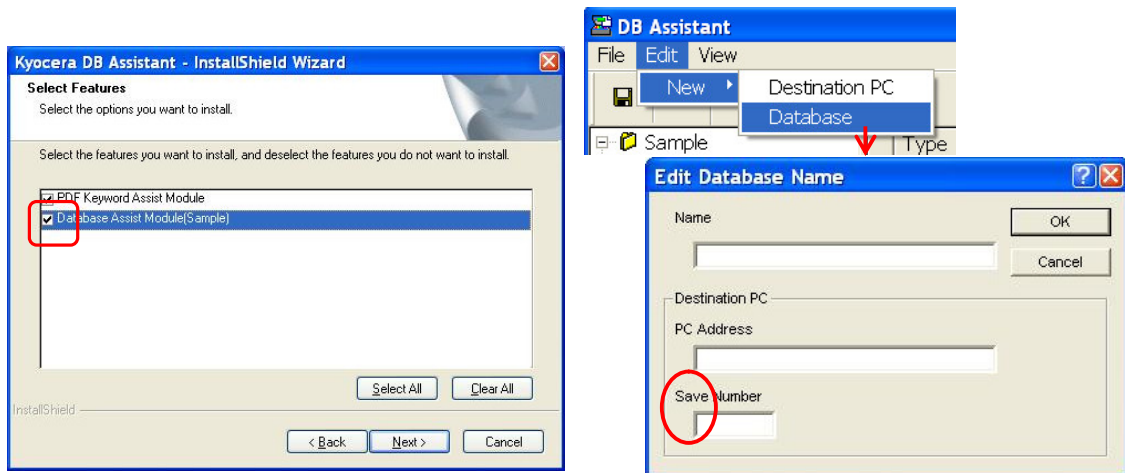
How to use PDF Keyword Assist

- ◆ PDF Keyword Assist option
 1. Add the 'Destination PC' in the DB Assistant.
 2. As 'Save Number', select SFU folder's number that selected as 'PDF Keyword Embedder'.
 3. Select Database Connection in TASKalfa ci, and select the destination that added in the DB Assistant as 'Destination PC'.
 4. Scan with PDF format, then the selected item in the panel is embedded in PDF property.



How to use Database Assist

- ◆ Database Assist option
 1. It is necessary to install the 'Database Assist Module' DBA option.
 2. Add the 'Database' in the DB Assistant.
 3. As 'Save Number', select SFU folder's number that selected as 'Database Link Handler'.
 4. Select Database Connection in TASKalfa ci, and select the destination that added in the DB Assistant as 'Database'.
 5. When scanned, the selected item in the panel is stored as CSV file in the same SFU folder.



Firewall Settings

- ◆ The Database assistant requires ports to be opened in the firewall for correct operation:
 1. Port: 37169
 2. Port: 9822
 3. Port: 21